

JAMESTOWN A.H. & F. SOCIETY INC - SINCE 1874, PRESENTS THE 149th

# SOMETHING FOR EVERYONE!

## JAMESTOWN SA's PREMIER COUNTRY SHOW

OCTOBER 5th & 6th, 2025 | VICTORIA PARK, JAMESTOWN

OFFICIAL  
2025  
SHOW BOOK

Photo by Alysha Sparks

visit: [www.jamestownshow.com.au](http://www.jamestownshow.com.au)

or find us on facebook @JamestownShow

Office: will be open Mon 22nd Sept to Mon 6th Oct,  
10am - 2pm daily, unless otherwise stated.

### Admission

Adults \$16, Children under 16 \$8

Children Aged 4 and under FREE

Motor Vehicles \$2

BUY TICKETS NOW!



GATES OPEN @ 10am SUN 5th OCT | GATES OPEN @ 8am MON 6th OCT for a 2nd Day of Show Fun!  
OFFICIAL OPENING by Gold Medal Croquet Champion SIMON HOCKEY @ 12pm SUNDAY 5th OCT.



## PLATINUM SPONSORS

# WSB DISTRIBUTORS

**CC COOPER & CO**

SINCE FOOD • FODDER • FIBRE 1858

**HuntsFuel**

**edf**  
renewables

**PIRSA**

## GOLD SPONSORS

**DULCIE**

**awi**

**THE WOOLMARK COMPANY**

**SPENCE DIX & CO**

**morgan sawmill**

**Nutrien**  
Ag Solutions<sup>®</sup>



**EnergyAustralia**  
LIGHT THE WAY



**Elders**

**THE PARK**  
JAMESTOWN

**SOLAR**  
WATER PUMPS  
AUSTRALIA

**AC Thomas Drillers**

**BalcoAustralia**  
The future of hay

**SPARKS FARMING**  
OAKLEA PARK • MUNDUNEY • CALCANNIA

**\*TRACEYDEWELL Designs**

**WEBB'S TYRE SERVICE**  
**DUNLOP**

**FLINDERS BUILDING**

**BACON**  
SHEARING CO.

**MUMMERY**  
AG SERVICES

**PASTORAL**  
Panels

## SILVER SPONSORS

**Heiniger**

**JEFF ROWE**  
TRANSPORT

**Murray Pest Control**  
Jamestown, Pt Pirie, Pt Augusta & Outback SA

**RAILWAY**  
HOTEL MOTEL  
JAMESTOWN

**MID NORTH EQUIPMENT AND SAFETY**

**RICE**  
ELECTRICAL PAINTBOYPAGE

**Insurance Solutions**

**REDDEN BROS. PTY LTD**

**WARDLE**  
Co.  
Real Estate & Livestock

**WALKINGTON'S**  
INSURANCE AGENCIES

## BRONZE SPONSORS

**GILMAC**

**JAMESTOWN DENTAL**

**NR AG**

**BRITT'S BEAUTY BABY**

**Shellie's Shoes**

**TOYOTA**  
Kelly Toyota  
Jamestown

**BGB**  
Benton General Builders  
QUALITY NEW HOMES & RENOVATIONS

**Rynne's HOME**  
Hardware & Sports

**MANNANARIE MANOR**

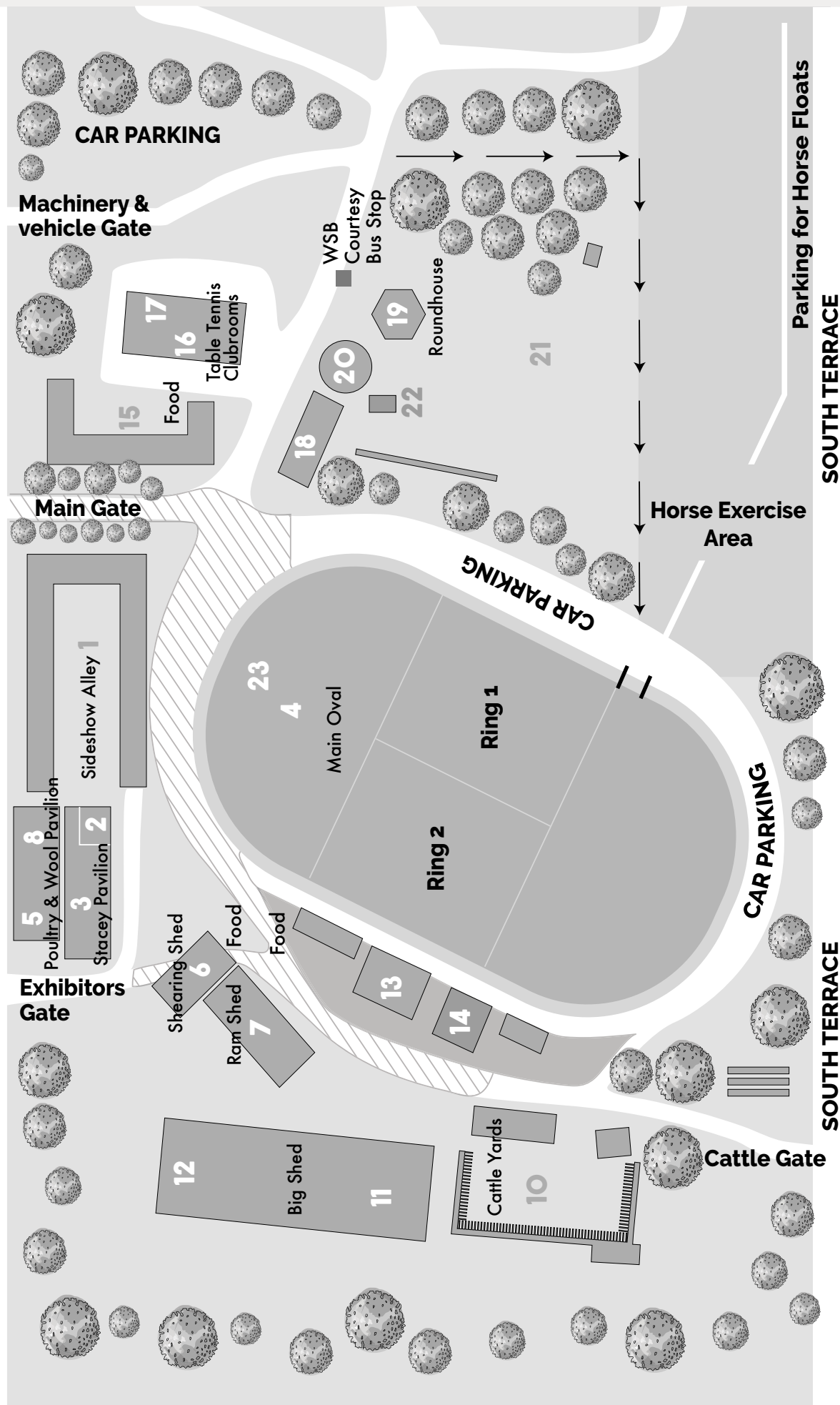
# SECTIONS & ENTRY REGISTRATION CLOSING DATES

SECTION		CLOSING DATE	PAGE/s
A	Beef Cattle .....	Friday 3rd Oct.....	16
C	Junior Livestock & Fleece Judging.....	Sunday 5th Oct, 12pm.....	18 - 19
D	Rural Ambassador, Young Ambassador & Show Personality .....	Sunday 5th Oct .....	20
E	Nutrien Ewe Hogget Competition .....	Monday 22nd Sept.....	22 -23
F	Scarecrow Competition .....	Friday 3rd Oct.....	26
G	Wool.....	Friday 3rd Oct.....	28
H	Wool Handling .....	Monday 22nd Sept.....	29
I	Sports Shear .....	Monday 22nd Sept.....	30
J	Speed Shear .....	Sunday 5th Oct .....	30
	Stacey Pavilion Guidelines .....		34
K	Poems & Stories .....	Fri 19th Sept, 3.30pm.....	35
L	Fruit, Nuts, Vegetables, Eggs, Honey .....	Friday 3rd Oct.....	37 - 38
M	Pot Plants, Floral Arrangements, Cut Flowers (Including Junior Section) .....	Friday 3rd Oct.....	39 - 42
N	Home Brewed Beer .....	Thursday 3rd Oct.....	43
O	Preserves, Pickles, Jams, Gift Baskets .....	Friday 3rd Oct.....	44
P	Pastries, Cakes .....	Friday 3rd Oct.....	45 - 48
Q	Craft & Junior Art & Craft .....	Friday 3rd Oct.....	50 - 51
R	Art, Metal Art & Woodwork .....	Friday 3rd Oct.....	52
S	Knitting & Crochet .....	Friday 3rd Oct.....	53
T	Sewing, Needlework, Patchwork, Quilting .....	Friday 3rd Oct.....	54
U	Mud Pies .....	Friday 3rd Oct.....	55
V	Photography .....	Monday 29th Sept .....	56
W	Poultry .....	Friday 3rd Oct.....	57 - 60
X	Pigeons.....	Monday 29th Sept .....	63 - 65
Y	Classic Cars, Motorbikes & Old Machinery .....	Monday 6th Oct.....	67
Z	Horses in Action .....	Wednesday 1st Oct .....	68 - 69
	Rules and Regulations .....		70

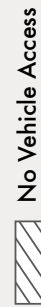
PLEASE READ THE SECTION INFORMATION BEFORE ENTERING AND NOTE THE DATES AND TIMES FOR BRINGING IN YOUR ENTRIES AND/OR ANIMAL STOCK TO THE SHOW.  
THE CONVENOR HAS THE FINAL SAY ON ALL ENTRIES.

## KILMARNOCK TERRACE

## KILMARNOCK TERRACE



- |                              |   |                                  |                                   |                         |
|------------------------------|---|----------------------------------|-----------------------------------|-------------------------|
| 1. Sideshow Alley            | 7. Ram Shed                                     | 13. Football Clubrooms           | 18. Miniature Machines            | 23. Vintage Cars Monday |
| 2. Show Office               | 8. Wool Pavilion                                | 14. Public Toilets & Baby Change | 19. Roundhouse/Sheaf Toss         |                         |
| 3. Stacey Pavilion           | 10. Cattle Area                                 | 15. Outside Trade Sites          | 20. Kids Entertainment & Paw Walk |                         |
| 4. Main Oval - Horses Monday | 11. Big Shed                                    | 16. Table Tennis Club            | 21. Machinery Sites/Cars          |                         |
| 5. Poultry Pavilion          | 12. Kids Entertainment @ Big Shed & Baby Change | 17. Public Toilets & Baby Change | 22. Public Toilets                |                         |
| 6. Shearing Shed             |   |                                  |                                   |                         |







# PRESIDENTS MESSAGE 149th Show

It is with great pride and gratitude that I welcome you to the 149th Jamestown Show.

Over the past few years, our region has weathered some immense challenges, from the uncertainty and disruptions brought by COVID-19 to the more recent dry seasonal conditions affecting our agricultural community. These times have tested the resilience of a lot of rural communities like ours, but once again, Jamestown has proven its strength, unity, and unwavering spirit.

Despite the hurdles, our community continues to show up year after year to support and celebrate the Jamestown Show. The continued support from our sponsors, local council, and local businesses is something we do not take for granted. Your generosity plays a vital role in keeping the tradition of the Jamestown Show alive and thriving.

Putting on a show of this scale is no small task. It takes dedication, energy, and countless volunteer hours to bring this event to life. To each volunteer, whether you've helped behind the scenes, served on committees, worked as convenors or judges, managed entries or attended working bees, thank you. Your hard work and community spirit are the beating heart of our Show. A heartfelt thank you must go to the executive committee members, without your passion and support this event would not be possible.

The committee has worked hard to deliver a program that brings joy, entertainment, and connection to all who attend. Whether it's traditional events like the livestock competitions or the shearing and wool handling, the show rides, demos and competitions designed to delight the young and the young at heart, we aim to offer something for everyone. Creating a show that's fun, inclusive, and memorable is at the heart of everything we do.

As we move one step closer to our 150th milestone, I encourage everyone to take a moment to reflect on what this event represents: a celebration of our agricultural roots, local talent, creativity, and, most importantly, community.

Thank you for your continued support. Here's to another successful and memorable Jamestown Show.

Amy Hagger  
**President.**

**Thank You to Platinum Sponsor:**



**edf**  
**renewables**

# JAMESTOWN A, H & F SHOW SOCIETY INC

ABN 66 911 469 982

## OFFICIALS

<b>Patron</b>	Tony Bray	<b>Stacey Pavilion Chef Steward</b>	Kaye Bottrall
<b>President</b>	Amy Hagger	<b>Ground Stewards</b>	Angus Barnden
<b>Senior Vice President</b>	Angus Barnden	<b>Honorary Legal Advisor</b>	John Voumard
<b>Junior Vice President</b>	Steph Lunn		
<b>Secretary</b>	Sarah Holloway	<b>Honorary Medical Officer</b>	Goyder's Line Medical Practice
<b>Media Marketing</b>	Tracey Dewell/ George Seppelt		
<b>Show Entries</b>	Sharon Hagger	<b>Gate Managers</b>	Leith Cooper & JASC
<b>Treasurer</b>	Molly Noonan	<b>Stacey Pavilion Representative</b>	Rosemary O'Leary
<b>Public Officer</b>	Seth Cooper	<b>Vic Park Trust Delegate</b>	Matt Scharkie
<b>Sponsorship</b>	Larissa Leslie	<b>Financial Auditing</b>	Mid North Accounting

### EXECUTIVE COMMITTEE:

Rosemary O'Leary, Leith Cooper, Zara Cooper, Merv Robinson, Matt Scharkie, Richard Daley, David Seth Cooper, Annabelle Porter, George Seppelt & Ben Rolph

### SUB-COMMITTEES

**Stacey Pavilion:** Chairperson Rosemary O'Leary, Secretary Nanette Simpson, Kaye Bottrall, Mary Hagger, Ian Jaeschke, Maureen Growden, Raelene Blake, Deb McCarthy, Lisa Hall, Candice Ellis, Helen Lehmann, Karen Heness, Jane Redden, Chris Crawford, Barb Carr, Tash Downing, Alison Dunling & Sarah Rajkovic.

**Sheep & Wool:** President: Braden Hagger,, Secretary: Shannon Donoghue, Members: James Moore, Matt Scharkie Trevor Crawford, Bill Blake, Dan Porter, Braden Hagger, John Staker, Geoff Thomas, Christian Cunningham, Jenni-Lee Case, Seth Cooper, Ali Cooper, Zara Cooper, Ben Rolph, Matt Lawler, Larissa Leslie & Hayward Paynter

**Cattle:** Chairperson Richard Daley, Members: Chris Malone, Warren McCallum, Hayward Paynter, Tom Malone

**Horses:** Gabi Ashmeade

**Media, Marketing & Sponsorship:** Tracey Dewell, Larissa Leslie, Matt Scharkie, Steph Lunn, George Seppelt & Angus Barnden.

**Fashion Parade:** Pam Staker

### CONTACT US:

PO BOX 188 Jamestown SA 5491

P Sarah 0493 717 476

E [secretary@jamestownshow.com.au](mailto:secretary@jamestownshow.com.au)

W [www.jamestownshow.com.au](http://www.jamestownshow.com.au)

F @Jamestownshow

### Bank Details:

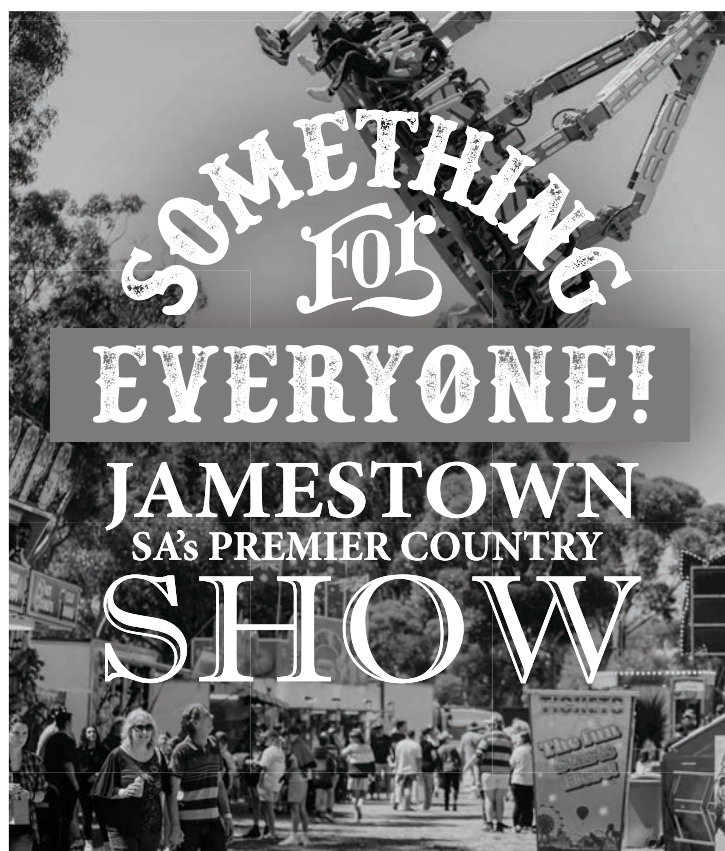
BSB: 085 - 645

Account: 1867 25 930

### SHOW OFFICE OPENING HOURS

Monday 22<sup>nd</sup> September – Monday 6<sup>th</sup> October 2025

10am- 2pm unless otherwise stated



EVERY SUN & MON OF THE  
OCT LONG WEEKEND

[www.jamestownshow.com.au](http://www.jamestownshow.com.au)



# 2024 LIST OF SHOW MEMBERS & DONORS

## **\$30 - Members & Donors**

Arthur, Ian	Downing, Barb & Pete	Lunn, Stephanie	Richards, Jim E
Barrett, Emily	Ellis, Candice	Main, Julia	Riwai, Tengarupiki & Maureen
Bottrall, TL & KL	Flower, A J	Malone, Thomas	Rolph, Ben
Bottrall, TL & KL	Fulwood, I & M R	Malone, Veronica	Russell, Pamela
Bray, A D & J F	Gibb Brothers,	Mccarthy, D & M	Rynnes Hardware & Sports Store,
Campbell, Mrs Val	Harris, Brenton	Meaney, K	Scharkie, MT & EL
Case, LM & PL	Haynes, L R	Millane, Sharon	Seppelt, Jo
Clarke, Jan	Heness, SA & KM	Modystach, John & Judy	Simpson, C S & A M
Clarke, John	Holloway, Sarah	Moore, JK	Simpson, Margie
Coleman, G R	Honan, Robert & Judy	Mudge, Craig	Smith, R & D
Cooper, L & A	Hughes, Leah	Mummery, Tom & Erin	Sparks, Stella
Cornish, S	Jacka & Son , AC	Napper, V L	Suridge, Kevin
Crawford, T H & C D	Johnston, Wayne & Denise	Paynter, AR & JT	Voumard, Sarah
Crawford, J A	Jones, Adrian	Paynter, Hayward	Voumard Lawyers,
Denholm, John	Keatley, MJ & KL	Pollard, L & J	Warr, Gary & Gerardine
Denholm, Catherine	Keatley, David	Porter, K J	Young, T J & J C
Dewell, A & T	Kelly, Carmel	Priest, Fiona	
Dibben, Rosalie	Lawrie, N	Redden, N & J	
	Lloyd, Gary	Redden Bros,	

## **\$45 + Members & Donors**

Allen, L M	Downing, JL & NJ	Kelly, Annie	Power, G & V
Ashby & Sons, G E	Duncan-Tiver, ME & PM	Kelly Toyota,	Richmond, Steve
Beleast Ag,	Dunn, K L	Kitschke, Martin	Robinson, Ruth
Blake,	Ellis, T R & L P	Kitschke Ag,	Robinson, M J & A J
Boolapuckee PL Minburra Station,	Flannery, T & R	Kupke, Kylie	Robinson, Darren & Kerrie
Booth, M	Frost & Co, G P	Lang, Sam	Sanders, RJ & MS
Bottrall, NL	Ganley, DJ & GM	Lang, Marie	Simpson, G I & B A
Boulton, B R & P J	George, Valmai	Lawson, Mr I R	Simpson, Nanette
Bradfield Merinos,	Gillett, Anne	Leesong & Sons, A C & K E	Simpson, RJ & SM
Bradtke & Son (Lazerline), C H	Glen Holme Dohne Stud,	Lehmann, BJ & AJ	Simpson, D E
Bray, PD	Goodes, Stacey & Cameron	Lehmann, T J & H	Smallacombe, M C & C J
Bretag, C J & D J	Green, Elizabeth	Lehmann, P J & D	Sparks, SC & MJ
Briggs, David and Margaret	Growden, D K & L J	Leslie, Larissa	Sparks Farming,
Brooks, Reece K	Growden, M	Lines Gum Hill,	St Marks College,
Burgess, J W & L R	Hagger, Paul and Amy	Lynch, Janine	Stacey, DC & ML
Butterick, Katrina	Hagger, Matt & Mel	Malone, C J & D M	Stacey, R M & J G
Calumba Hair,	Hagger, Lauren	Manna Creek Pty Ltd,	Stacey, Ellie
Case, R & J	Hagger, J K & S N	Marlow, Craig	Stacey, AM & CM
Catford, CM	Hagger, Braden	Martin & Sons-Coolatoo/Baratta,	Staker, J W & P I
Catt, Christopher	Hagger, AG & MT	E G & R C	Suhrcke, Brigit
Clark, J P	Hale Partners,	Mattner, Paul	Sullivan & Co, J & F
Clark, C J & A M	Hall, M D	Mcadam, Cherie	Sutter, J & K
Clark, Bernadette	Hall, A J & M K	Mccarthy, JP	Symonds, I A & M A
Clark & Sons, Leo	Hall, T F & L J	Mid North Accounting,	Thomas, V
Clark Brothers,	Hammat, Ann	Moore, KL	Thomas, B K & A B
Clark Forest View,	Hammat, G & L	Moore, Rebecca	Tohl, F & K
Conway & S P Murphy, Dr R L	Hams, K W & H K	Moore, James	Toholke, A & I
Cooper, TK & AR	Harding, M D & R	Moore, G & L	Ulooloo Partners,
Cooper, WG	Henderson, D R & E M	Moss, BJ & SF	Venning, Debbie
Corfe, BJJ & GAR	Hogan, A & S	Mulligan, Gerral	Walkington, ME & JA
Couzner, R J & J E	Hornsedale Props,	Mumford, B M & B P	Wardle Real Estate,
Crawford, DJ	Hudson, Jillian	Murray Pest Control,	Wehrmann, James & Wanda
Crawford Strathdene Props,	Hunts Crash Repairs,	Nicholls, Zara	Woodman, Renee
Cummings, M C & K M	Jacka, L & S	O'leary, KJ & RA	Wurst, M P & C J
Davelle South Devons (Leese),	Jacka, N R & L J	Palmer & Co, W L	Wurst, Keith I
Davis Grain Pty Ltd,	Jaeschke, IR & KB	Pammenter, MD & SL	Young, M A
Dayley, R W R & K L	Jamestown Newsagency,	Perry & Sons, L H	Zanker, Emma
Dempsey, Mary	Jefferson, T R	PJ Hall & Co ,	
Down to Earth Computing, LM & DK	Keatley, R G & E R	Pollard, Alli	
	Kelly, MA & LA	Porter, D L & FA	
	Kelly, Donna	Portlands Nominees Pty Ltd,	

## PRESIDENTS FROM 1874

Joseph Thyer	1874 - 1880	M McCallum	1940 - 1942	L T Cooper	1991 - 1992
A McCallum Sr	1881	E S Cooper	1943 - 1944	W G Blake	1993
Geo Burton	1882	A J Symonds	1945 - 1948	A D Bray	1994 - 1997
Geo Lloyd	1883 - 1884	M J Cronin	1949	L T Cooper	1998
J Dixon	1885 - 1887	A R Bretag	1950 - 1959	D C Stacey	1999 - 2000
Joseph Thyer	1888	L D Graham	1960 - 1963	M E Walkington	2001 - 2002
A McCallum Sr	1889 - 1892	G H Blake	1963 - 1964	N H Gibb	2003 - 2004
John Chapman	1893 - 1895	C C Cooper	1965 - 1966	S J Seppelt	2005 - 2006
W. Avery	1896 - 1899	R J Smith	1967 - 1968	T F Hall	2007 - 2008
John Chapman	1900 - 1907	J J McInerney	1969 - 1970	S J Seppelt	2009
G E Maslin	1908	I G Moore	1971 - 1972	N J Downing	2010
John Coles Jr	1909 - 1911	T J McInerney	1973 - 1974	R L Schutz	2011
John Horgan	1912 - 1913	J A Keatley	1975 - 1976	A W Beyer	2012 - 2013
Robert Mitchell	1914 - 1916	J F Malone	1977 - 1978	S Seppelt	2014
A McCallum JR	1917 - 1919	W G Blake	1979 - 1980	P Lovell	2015
G H Napper	1920 - 1924	A V. Wurst	1981 - 1982	D S Cooper	2016 - 2019
H K Moore	1925 - 1927	C C Kerslake	1983 - 1984	M T Scharkie	2020 - 2022
Geo Kirk	1928 - 1930	L T Cooper	1985	J G Moore	2023 - 2024
W C Glasson	1931 - 1933	J F Malone	1986	A Hagger	2025
O. Ferguson	1934 - 1936	G A Lawrie	1987 - 1988		
F Cummings	1937 - 1939	C C Kerslake	1989 - 1990		

## SECRETARIES FROM 1874

J Moore	1874 - 1875	F R Lethbridge	1959 - 1962	V R Hector	1997 - 2003
J Wilkinson	1875 - 1877	J R Toholke	1963 - 1967	S N Hagger	2004 - 2007
G B Yeates	1878 - 1880	A B Kelly	1968 - 1972	K B Bottrall	2007 - 2011
J J A Clarke	1881 - 1886	S H Mattner	1973 - 1979	P Russell	2012 - 2015
C J Reade	1887 - 1899	W Miller	1980 - 1982	A G Semler	2016 - 2018
Richard Rowe	1900 - 1923	J R Toholke	1983 - 1988	A L Hagger	2019 - 2022
L M W Judell	1923 - 1945	S J Harding	1989 - 1996	L Leslie	2023
E V Clift	1946 - 1958			S Holloway	2024

## PATRONS FROM 1926

W Stacey	1926 - 1929	M. McCallum	1943 - 1949	J A Jonsen	2000 - 2002
H K Moore	1930 - 1936	A J Symonds	1950 - 1961	J F Malone	2003 - 2008
W C Glasson	1937 - 1938	A D Mitchell	1962 - 1971	A D Bray	2009
Geo Kirk	1939 - 1940	A R Bretag	1972 - 1974		
O Ferguson	1940 - 1942	C C Cooper	1975 - 2000		

## HONORARY LIFE MEMBERS

W M Stacey	R T Graham	C C Cooper	J A Jonsen	M Growden
R Rowe	O Ferguson	W D Cooper	J F Malone	N Lawrie
H Boucaut	A J Symonds	T L Malone	I G Moore	M Toholke
Geo Kirk	A D Mitchell	T J McInerney	L T Cooper	N H Gibb
W C Glasson	R G Moore	R J Smith	A D Bray	S J Seppelt
M McCallum	J F Martin	J J McInerney	W G Blake	K B Bottrall
W H Axford	K L Lawrie	S H. Mattner	J R Toholke	D S Cooper
F Cummings	S Wenham	C C Kerslake	J A Humphris	R Daley
P F Noonan	W E Symonds	I W Wehrmann	L H Messenger	M Scharkie
A R Bretag	G H Blake	A B Kelly	M E Walkington	

## SERVICE AWARDS

N Lawrie	P Moore	M Growden	M Kerslake	K B Bottrall	T Crawford
D Riddle	J Bishop	B Case	N F Young	T J Young	I Bradtke
G Jacka	J K Moore	J Staker	R M Stacey	P Hunter	
G Crawford	P C Redden	A Growden	E G Martin	J Barlow	
R Moore	M Toholke	R Brooks	M R Hagger	P Staker	



## PRIZE MONEY & TROPHIES

- Prize money can be collected from Show Office Monday from 9:00am to 3:00pm.
- If prize money is not collected by 3:00pm Monday and exhibitor has not made prior arrangement with the Secretary for alternative collection, it will be assumed the prize money is to be donated back to the Jamestown A, H & F Show Soc Inc.
- Prize money and trophies will be paid by Conveners in events held outside Stacey Pavilion.
- Prize money and trophies which have not been collected by 3:00PM Monday. Unless prior arrangement with the Secretary, will be forfeited.

## GATE KEEPING

The Society acknowledges with gratitude the continued support of the Jamestown Swimming Club Management Committee who handle the gate-keeping duties on Show Day.

## PARKING ON SHOW DAY & DISABLED PARKING

**CONVENER:** Trevor Crawford 0428 641 477

Vouchers for ring side (Eastern side of oval) and disabled parking are available from the secretary's office prior to the show.

### SUNDAY & MONDAY

All vehicle access to the Showgrounds will be through the gate located near table tennis on Kilmarnock Terrace, with vehicles being able to park around the eastern side of the show grounds.

At the conclusion of the fireworks display on Sunday evening vehicles will be able to leave the grounds via the Cattle Gate (SW of Showgrounds) onto South Tce.

Motor vehicles of members of the Society and of non-members will be parked on the eastern side of show grounds, entry via the Table Tennis gates, under the direction of stewards, as far as space available there will permit.

When this space has been occupied, vehicles will be parked on other parts of the showground, convenient for the Society and for vehicle owners. The committee has designed the parking arrangements to ensure the greatest possible safety for the motor vehicles and the convenience of the owners.

Vehicle owners are requested to assist the stewards by parking where directed.

Parking can be accessed from the Table Tennis gates on Kilmarnock Tce, unless otherwise stated.

### POULTRY

Reserved parking on Kilmarnock Terrace adjacent the poultry pavilion.

## STACEY PAVILION /SHEEP/WOOL

Drop off zone within the show grounds via gate on western side of Stacey Pavilion. Please do not park inside the show grounds unless in designated parking area.

## HORSES IN ACTION Cnr Irvine St & South Tce

## AGRICULTURAL IMPLEMENTS, VEHICLES, ETC.

Entry via gates near table tennis centre, Kilmarnock Terrace.

**NOTE:** The use of any machinery making excessive noise will be limited to 5 minutes use per hour on the half hour.

**UNLOADING FACILITIES AVAILABLE.**



# ELDERS JAMESTOWN, FOR FARMERS AND THE LOCAL COMMUNITY

## Office Staff

Nick Brooks (Manager) 0427 000 115  
Emily Cousins (Support) 0400 974 174

## Livestock

Simon Harding 0429 622 595  
Gilbert Murcott 0438 060 044

## Real Estate

Alison Ward (Resi) 0417 810 791  
Rob Calaby (Rural) 0428 560 301

## Merchandise

David Klingner 0417 107 953  
Patrick Page Jnr 0406 922 877  
Lucy Meyer 0438 108 245

## Livestock Production

Tim Shepherd (Wool) 0472 674 501  
Emma Shattock (LPA) 0427 388 365

## Elders Finance

Samantha Catlin 0475 065 467

## Agronomy

Darren Pech 0429 704 520  
Alf Weaver 0408 954 133  
Beth Humphris 0418 327 460  
Brett Krieg 0488 787 603

## Stud Stock

Tony Wetherall 0427 390 001  
Alistair Keller 0499 457 023

## Elders Insurance

Rob Morris 0427 212 413

**Elders Jamestown**  
10 McLeod Rd, Jamestown, SA 5491

p. 08 8664 2300  
e. [jamestown@elders.com.au](mailto:jamestown@elders.com.au)



# BalcoAustralia

## REDEFINING THE OATEN HAY INDUSTRY

@balcoaustralia

27 Edith Terrace, Balaklava | 08 8862 0000 | [balco.au](http://balco.au)



# Jamestown Show Members 2025!

The Jamestown Show committee kindly asks all previous and new members to renew their memberships online this year.

Renewing online is a great opportunity to get discounted tickets and ensures you don't miss out on important updates.

**use this form or online >>>**

# Become a Member of the Show and SAVE!

## > \$40 Membership

**Includes** – 2 Adults and 3 Children Tickets and 1 Car Park, plus free entries for exhibits in Stacey Pavilion & Poultry Sections.

## > \$25 Membership

**Includes** – 2 Adult Tickets, and 1 Car Park.

**extra \$5 for printed Show Book**

Purchase online via  
[www.jamestownshow.com.au](http://www.jamestownshow.com.au)



**Or use the below form to pay in person @ Shear Magic**  
**Open** Wed – Fri 9am – 5.30pm  
Sat 9am – 12pm **or drop off at the Secretary's Office locked letterbox located at the Vic Park showgrounds.**

## Your contact details:

First Name ..... Last Name .....

Phone No..... Email .....

Address .....

Suburb..... State .....Postcode.....

**Membership entitles the right to vote at the AGM on the third Wednesday in February 2026.**

**These Memberships are only available prior to Show Day.**

## Which Membership would you like?

☐ **\$40** Membership ☐ **\$25** Membership

## Would you like a Show Book?

☐ **NO**, I will be happy to view the book via the website @ [www.jamestownshow.com.au](http://www.jamestownshow.com.au)

☐ **YES**, I would like a digital copy sent to me via email free of charge

☐ **YES**, I would like a printed copy posted to me and I'm happy to pay the **\$5 charge for postage**

## Would you like annual re-occurring membership?

☐ **YES**, please make my membership annual re-occurring membership

☐ **NO**, I will control my membership and reapply on a year by year basis

*Avoid having to fill in this form each year by opting for annual re-occurring membership, we will email you an invoice annually.*

## Would you like to offer the Show a Donation?

☐ **YES**, I would like to offer \$..... ☐ **NO**

## Payment Details (CREDIT CARD – you don't need to fill this in if paying in person)

Card Number     -     -     -

Expiry date   /   CCV    Total Amount to Pay \$ .....  
(located on the back of the card)

Signature of Payee .....Date .....

**Office use only** ☐ Paid cash ☐ Paid by Card Authorised by.....



# 2025 NASA Cookery Competitions



---

## Rich Fruit Cake Championship

Two Association finals are held each year at the NASA Shows. The winner from each will represent NASA at the Royal Adelaide Show in September 2026.

Exhibitors to use the set recipe, cake to remain un-iced and undecorated.

2025 competitions held at: Quorn & Eudunda

---

## Genoa Cake Competition

Two Association finals are held each year at the NASA Shows. The winner from each will represent NASA at the Royal Adelaide Show in September 2026.

Exhibitors to use their own recipe, cake to remain un-iced but may be decorated with almonds.

2025 competitions held at: Wilmington & Balaklava



find more information including recipes and judging tips on  
the SA Country Show website

**thank you to all of our sponsors & supporters**







# 2025 NASA Cookery Competitions



## CWA/Laucke Scone Competition

A competition is held at each show (if applicable) with the winner chosen to represent the Show at the Association Final held at the NASA Presentation Dinner on the 28 March 2026 in Crystal Brook.

Two Association Winners are chosen to represent NASA at the Royal Adelaide Show in September 2026.

Winner will be the best variation of savoury scones using the Laucke Country Women's Scone Mix. 5 identical scones are to be presented.

## Native Ingredient Competition

A competition is held at each show (if applicable) with the winner chosen to represent the Show at the Association Final held at the NASA Presentation Dinner on the 28 March 2026 in Crystal Brook.

One Association Winner will be chosen to represent NASA at the Royal Adelaide Show in September 2026.

5 small identical items are to be presented.



find more information including  
recipes and judging tips on the  
SA Country Show website

**thank you to all  
of our sponsors  
& supporters**



**creative  
native**

# 2025 NASA Show Contact Information

Show	Name	Address	Email	Mobile	Website
<b>NASA</b> President	Peter Angus	PO Box 98, Mallala SA 5502	peteangus1@gmail.com	0408 826 009	
<b>NASA</b> Secretary	Helane Blieschke	PO Box 172, Melrose SA 5483	nasasecretary1@gmail.com	0428 765 805	
<b>NASA</b> Treasurer	Morgan Potter		nasasecretary1@gmail.com	0403 693 040	
<b>Balaklava</b> President	Callum March		marches@richmondpark.com.au		www.balaklavashow.com.au
<b>Balaklava</b> Secretary	Danielle Mudge	PO Box 181, Balaklava SA 5461	balakshow@gmail.com	0429 387 714	
<b>Burra</b> President	Matt Jacka		president@burrashow.com.au		www.burrashow.com.au
<b>Burra</b> Secretary	Trish Ritchie	PO Box 65, Burra SA 5417	secretary@burrashow.com.au	0479 158 232	
<b>Clare</b> President	Sid Nicholls		sidnicholls75@gmail.com	0407 462 189	www.clareshow.com.au
<b>Clare</b> Secretary	Liz Fitzgerald	PO Box 3752, Clare SA 5453	clareaghsoc@gmail.com	0413 042 992	
<b>Crystal Brook</b> President	Kim Zohs		president@crystalbrookshow.com.au		www.crystalbrookshow.com.au
<b>Crystal Brook</b> Secretary	<i>vacant</i>	PO Box 159, Crystal Brook SA 5523	secretary@crystalbrookshow.com.au		
<b>Eudunda</b> President	Garry Schutz		gtschutz2@gmail.com		www.eudundashow.au
<b>Eudunda</b> Secretary	Melinda Schutz	PO Box 311, Eudunda SA 5374	secretary@eudundashow.au	0408 353 906	
<b>Gawler</b> President	Braden Turner		president@gawlershow.org.au		www.gawlershow.org.au
<b>Gawler</b> Secretary	Ainslee Allen	PO Box 116, Gawler SA 5118	secretary@gawlershow.org.au	Office 8523 1477	
<b>Jamestown</b> President	Amy Hagger		president@jamestownshow.com.au	0418 795 525	www.jamestownshow.com.au
<b>Jamestown</b> Secretary	Sarah Holloway	PO Box 108, Jamestown SA 5491	secretary@jamestownshow.com.au	0407 604 861	
<b>Kapunda</b> President	Doug Hazel		horusleathercraft@gmail.com	0410 077 678	www.kapundashow.org.au
<b>Kapunda</b> Secretary	Crystal Roach Tess Gerhardy	PO Box 85, Kapunda SA 5373	kapundashow@gmail.com	CR: 0431 622 004 TG: 0439 813 433	
<b>Melrose</b> President	Lachlan McCallum		coonato.mechanical@gmail.com	0418 848 516	
<b>Melrose</b> Secretary	Helane Blieschke	PO Box 84, Melrose SA 5483	melroshow@outlook.com	0428 765 805	
<b>Quorn</b> President	Sue Trittmacher		tritty68@gmail.com	0434 396841	
<b>Quorn</b> Secretary	Bronwyn Fisdell	PO Box 380, Quorn SA 5433	quornshow@gmail.com	0488 506 569	
<b>Wilmington</b> President	Melenee Ellard		ellards.4@bigpond.com	0428 294 589	
<b>Wilmington</b> Secretary	Ann Frick	PO Box 1, Wilmington SA 5485	wilmingtonshowsecretary@gmail.com	0427 338 097	



# 2025 NASA Show Information

**What is an Aggregate Trophy?** NASA awards a trophy to the Exhibitor whose exhibits gain the highest number of points in the nominated sections. Exhibitors who submit entries in at least two different Northern Agricultural Shows will automatically be eligible for this Aggregate. Points are allocated as follows: First – 5 points | Second – 3 points | Third – 1 point

## 2024 Show Season Association Aggregate Trophies

Livestock – **Heath Tiller**  
Ag Produce – **Tanya Jaeger**  
Photography – **Sharna Juett**  
Handicraft – **Alisha Fenton**

## 2024 Show Season Rich Fruit Cake

Gawler – **Emma Tiller**  
Burra – **Nanette Simpson**

## 2024 Show Season Genoa Cake

Eudunda – **Emily Buddle**  
Melrose – **Nanette Simpson**

## 2024 Show Season Laucke & CWA Scone Competition

Kiara Stacey – **Jamestown Show**  
Marilyn Wardle – **Crystal Brook Show**

## 2024 Show Season Native Ingredient Competition

**Nanette Simpson** – Crystal Brook Show

## Sponsors of 2025 NASA Presentation Dinner, Young Rural and Rural Ambassador Award

Agricultural Societies Council of SA  
Elders Roseworthy  
Peter Angus of Maroola White Suffolk Stud  
MGA Insurance  
Quality Livestock & Wool

## 2025 Northern Rural Ambassadors

**Ashlee Allegretto** – Balaklava Show  
**George Seppelt** – Jamestown Show  
Runner up: **Sean Monsigneur** – Wilmington Show

## 2025 Northern Young Rural Ambassadors

**Belinda Jaeger** – Eudunda Show  
**Lacey Cains** – Melrose Show  
Runner up: **Charlie Cooper** – Jamestown Show

## 2026 Association Presentation Dinner

**Host:** North Western Agricultural Society,  
Crystal Brook Saturday, 28 March 2026  
**2027** – Quorn Agricultural Show Society

## 2025 Show Season Fruit Cake Semi Final

Quorn  
Eudunda

## 2025 Show Season Genoa Cake Semi Final

Wilmington Balaklava

## 2025 Show Season Scones

Savoury

## 2025 Show Season Aggregate Trophy

**Primary** – Agricultural Produce & Wool  
**Pavilion** – Photography & Produce

## 2025 Show Dates

Show	2025 Date	2026 Date
Balaklava	Saturday, 27 September 2025	Saturday, 26 September 2026
Burra	Saturday, 11 October 2025	Saturday, 10 October 2026
Clare	Saturday, 18 October 2025	Saturday, 17 October 2026
Crystal Brook	Saturday, 9 August 2025	Saturday, 8 August 2026
Eudunda	Sunday, 9 November 2025	Sunday, 8 November 2026
Gawler	Saturday, 30 August & Sunday, 31 August 2025	Saturday, 29 August & Sunday, 30 August 2026
Jamestown	Sunday, 5 October & Monday, 6 October 2025	Sunday, 4 October & Monday 5 October 2026
Kapunda	Saturday, 25 October 2025	Saturday, 31 October 2026
Melrose	Saturday, 4 October 2025	Saturday, 3 October 2026
Quorn	Sunday, 28 September 2025	TBC
Wilmington	Sunday, 21 September 2025	Sunday, 20 September 2026

# A | BEEF CATTLE

**CHAIRPERSON:** Richard Daley 0438641463

**CONVENOR:** Chris Malone 0418 807 414

Stewards: Tom Malone, Warren McCallum

Points Allotted: First 5, Second 3, Third 1.

**Monday 6th October 2025**

## Online Entries/Membership via

<https://showday.online/show/jamestown>,  
closing Date Friday 3rd October 2025

**Manual Entry** either in Show Book, online at  
<https://jamestownshow.com.au> or email  
[entries@jamestownshow.com.au](mailto:entries@jamestownshow.com.au)

## CONDITIONS:

Please find Animal Handling (Individual) Participant Risk Acknowledgement & Waiver in middle of show book to be filled in and returned to secretary prior to acceptance of entries.

**ALL animals must be fitted with NLIS device and will be scanned.**

Bulls must have a nose ring. All other animals must have a nose grip (excluding calves at foot). Animals are only eligible to compete in one class (as an individual, i.e. calves at foot are not to be exhibited as individuals). All cattle to be on the show grounds by 9:00am on Monday. All cattle are to be paraded whilst being judged.

**Johnes Disease - The minimum status requirements for entry is J-Bas 6.**

Judging Commences at 9:30am with the Beef

Herdsman followed by general classes

*Please Note Entry for Junior Handlers and Junior Judging are in Section C and will be held on Sunday 5th October.*

## BEEF HERDSMAN'S EXHIBIT

For the herdsman who best prepares stock for the show ring, Attention being given to the manner in which they are brought to the judge. Competitors must parade 3 head of cattle (representing both sexes) from one stud. The judge will disregard attendants other than the herdsman. All attendants must wear white dust coats or breed uniform. Cattle must be selected from the herd where the herdsman is employed. The name of the herdsman and stud must be stated on the entry form.

**GE Ashby Memorial Trophy valued at \$40 donated by M C Ashby & Co**

## A - Jamestown Interbreed Beef Cattle Show 2025

Ribbons for 1st, 2nd and 3rd classes 1-16

Prize Money First \$25 Second \$15 Third \$10 classes 1-16

Class 1 Heifer under 12 mths (born before 1/9/22)

Class 2 Heifer 12 mths and under 14 mths (1/9/22 – 1/7/22)

Class 3 Heifer 14 mths & under 16 mths (1/5/22 – 30/6/22)

Class 4 Heifer 16 mths & under 20 mths (1/1/22 – 30/4/22)

- **Junior Champion Female - Beef Cattle, \$40 trophy donated by Moyle Park Red Poll Stud**
- **Reserve Junior Champion Female - Beef Cattle - \$25, cash donated by Redden Bros**

Class 5 Pair of Heifers under 20 mths

- **\$40 voucher donated by KLR Nutrien Ag Solutions Partner**

Class 6 Cow 20 mths and under 30 mths (1/3/21 – 31/12/21)

Class 7 Cow 30 mths and over (born before 1/3/21)

- **Senior Champion Cow - Beef Cattle, \$60 voucher donated by KLR Nutrien Ag Solutions Partner**
- **Reserve Champion Cow - Beef Cattle - \$25, cash donated by Redden Bros**
- **Grand Champion Female - Beef Cattle - \$125 Donated by \$50 cash donated by Davelle South Devons - DC & RD Leese, \$25 cash donated by Redden Bros, \$50 trophy donated by JR Toholke**

Class 8 Bull under 12 mths (before 1/9/20)

Class 9 Bull 12 mths and under 14 mths (1/9/22 – 1/7/22)

Class 10 Bull 14 mths and under 16 mths (1/5/22 – 30/6/22)

Class 11 Bull 16 mths and under 20 mths (1/1/22 – 30/4/22)

- **Junior Champion Bull - Beef Cattle, \$40 voucher donated by KLR Nutrien Ag Solutions Partner**
- **Reserve Junior Champion Bull - Beef Cattle - \$25, cash donated by Redden Bros**

Class 12 Pair of Bulls under 20 mths

- **\$40 voucher donated by KLR Nutrien Ag Solutions Partner**



Class 13 Bull 20 mths and under 30 mths  
(1/3/21 – 31/12/21)

Class 14 Bull 30 mths and over (before 1/3/21)

- Senior Champion Bull - Beef Cattle - \$60 cash donated by Clare Veterinary Clinic
- Reserve Senior Champion Bull - Beef Cattle - \$25 cash donated by Redden Bros
- Grand Champion Bull - Beef Cattle - \$125 - Trophy valued at \$25 by Fairvale Farms, \$75 voucher donated by NHD Murray Bridge, \$25 Cash donated by Redden Bros, John Malone Memorial Perpetual Trophy
- Supreme Exhibit - Beef Cattle - \$50 cash donated by Davelle South Devons - DC & RD Leese, \$120 voucher donated by KLR Nutrien Ag Solutions Partner

Class 15 Pair, Bull and Female  
under 20 mths

- \$40 donated by Kelly Bros

Class 16 Breeders Group – to comprise of 3 animals both sexes

- \$40 voucher donated by KLR Nutrien Ag Solutions Partner
- Most Successful Exhibitor - \$50 cash donated by Redden Bros, \$50 trophy donated by TL Malone Memorial Trophy by VE & CJ Malone
- John Malone Memorial Perpetual Shield Grand Champion Beef Bull

#### **BEEF HERSDMAN'S EXHIBIT**

Class 17 Beef Herdsman's Exhibit

- GE Ashby Memorial Trophy valued at \$40 donated by MC Ashby & Co

^ **Commitment**

^ **Knowledge**

^ **Results**



Andrew Parsons - 0438 174 800  
Daniel Griffiths - 0437 486 771

Mark O'Leary - 0429 814 998  
Nick Billing - 0405 986 143

Daniel Doecke - 0458 748  
Joe Scammell - 0429 112 664



[spencedixandco.com.au](http://spencedixandco.com.au)



# **C | JUNIOR LIVESTOCK & FLEECE JUDGING**

**Sunday 5th October 2025**

**Registrations 11:30 – 12:00pm**

**Commencing at 12:00pm with Beef Cattle Junior Judging**

**followed by Beef Cattle Paraders**

**followed by Fleece**

**and Ram Junior Judging**

Free Entry For All Classes Entries Close Show Day

All Participants to meet at the Beef Cattle Ring at 12:00pm regardless of events entered

**Schools competing in Junior Judging are eligible for the Northern Shows Trophy. This is a trophy that is awarded to a school who have students participate in various shows in the region. For more information, please contact the Northern Areas Show Association (NASA).**

## **OVERALL JUNIOR JUDGING CHAMPION**

Junior Judges who enter 3 or more of the competitions go in the running for the Overall Junior Judging Champion and Reserve Junior Judging Champion Cup prizes. The prize winners are based on the total of Junior Judges best 3 scores. The Junior Judges with the greatest totals will be awarded the Overall Junior Judging Champion and the runner up will receive the Reserve Junior Judging Champion.

- CC Cooper & Co - Overall JJ Champion prize – Sash + \$200
- CC Cooper & Co - Reserve JJ Champion prize – Sash + \$100

## **C - BEEF CATTLE JUNIOR JUDGING**

**Convenor Richard Daley**

**To be conducted at the Beef Cattle Ring**

Open to competitors who must be under 25 years on 1st May in the year of the final championship at the Royal Adelaide Show. Juniors and Seniors will be judged separately. The winner of the Senior competition at the 2025 Jamestown Show will move to the final to be held at the 2026 Royal Adelaide Show.

Points for Competition:

1. All competitors will be allowed 5 minutes to assess the exhibits, which will be paraded for the competitors.
2. Each competitor will then be asked to line up the exhibits according to their rankings and express his/her view of the cattle exhibited to the over judge and spectators. 2 minutes should be sufficient time to express your views.
3. Competitors should have reasons organised and emphasise the most important points.
4. The main objective for the competitors is to give their reasons and to inform the judge what they saw and compared, in each animal.
5. Competitors should make comparisons between animals rather than describe individuals.
6. Competitors should be neatly attired - points will be deducted for poor presentation.
7. Four beef animals will be used for the comparison.

**Class 31 Under 15 years on Show Day**

- Sash + First \$30 Second \$10 Third \$5 donated by IG Moore Memorial

**Class 32 Over 15 years and under 25 years on 1st May 2022**

- Sash + First \$100 Second \$50 Third \$20 donated by CC Cooper & Co & Redden Bros Pty Ltd

## **C - BEEF CATTLE PARADERS**

**To be conducted at the Beef Cattle Ring**

**An animal can be provided**

**Conditions –**

- Nose clips must be used.
- Classes may be split at committee's discretion.
- Judge's decision is final.
- Judges can change paraders to another animal to finalise decision.
- Dust coats or breed uniform to be worn.

**Class 33 12 years and under on show day – Junior**

- First \$20 Second \$10 Third \$5 donated by Ben Crawford, Yellowie Props

**Class 34 Over 12 years and under 18 years on Show Day – Senior**

- First \$20 Second \$10 Third \$5 donated by Murray Pest Control

**Class 35 18 years and over on show day – open**

- Sash + First \$20 Second \$10 Third \$5 donated by Coolatoo Props, Bridgestone Tyre Centre Jamestown
- CHAMPION HANDLER - \$100 & Sash: \$25 cash donated by KJ & RA O'Leary, \$25 cash donated by Redden Bros Pty Ltd, \$50 cash donated by CC Cooper & Co

## C - JUNIOR FLEECE JUDGING COMPETITION

**Convenor:** John Staker

**To be conducted in the Sheep Pavilion**

The winners at the Jamestown Show will be eligible to compete in the State Final to be held at the Royal Adelaide Show in 2026.

The competition requires judging of four skirted fleeces and awarding points as follows, with the opportunity to write comments.

Clean Fleece Weight	30 points
Trueness to type	10 points (relative to AWEX ID e.g. MF1=10 points, MF7=4 points)
Uniformity of length	10 points
Soundness	10 points
Handle (softness)	10 points
Colour or Bloom	10 points
Character & style	10 points
Evenness	10 points
Total:	100 points

**Class 36** OPEN SECTION 25 years & Under on 1st May 2023.

- The winner will receive the Plugger Hall Memorial Award Sash + First \$100 Second \$50 Third \$30 Donated by CC Cooper & Co, Pam Staker, S C & M J Sparks and Barratta Pastoral

**Class 37** High School students under 15 years.

- Sash + First \$60
- Second \$40
- Third \$20
- Donated by G Coleman and Bradfield Merinos

## C - JUNIOR RAM JUDGING

**Convenor:** Ian Bradtke

To be conducted in the Sheep Pavilion

**Class 38** JUNIOR CLASS

Under the age of 15 on 1st May 2025

- Sash + First \$60
- Second \$40
- Third \$20
- Donated by CC Cooper & Co

**Class 39** OPEN SECTION

25 years and Under on 1st May 2025.

- Winner to receive Sash + \$100 donated by CC Cooper & Co & Sash
- Second Place to receive \$60 & Sash donated by P Mattner.
- Third Place receives \$40 & Sash donated by Bradfield Merinos
- Aggregate points Classes 30 - 39 - Wool - \$100 - \$50 prize money donated by R J C Evans & Co and \$50 Prize money donated by I M C Lazerline

**Sponsored By:**

**CC COOPER & CO**

SINCE FOOD • FODDER • FIBRE 1858

**THE FUTURE OF WOOL TESTING IS HERE.**

**Real-time, reliable wool micron testing in your hands**

Take your wool testing to the next level. Instant, accurate wool data at your fingertips. Forget delays and guesswork. Make faster, smarter decisions on wool quality and processing with confidence.

Know your micron – anytime, anywhere.

**Heiniger** | **woven optics**

[www.heiniger.com.au/wovenoptics](http://www.heiniger.com.au/wovenoptics)

# **D | RURAL**

## **AMBASSADOR, YOUNG**

## **RURAL AMBASSADOR &**

## **SHOW PERSONALITY**

### **D - RURAL AMBASSADOR**

#### **AMBASSADOR CONVENER:**

George Seppelt - 0455 021 302

Free Entry, contact the convener for further information

#### **PRIZES:**

- **Rural Ambassador 1st Prize: \$150 Gibb Bros., M Simpson, J K & S N Hagger**
- **Young Rural Ambassador 1st Prize: \$50 Tash Downing**

#### **AIM:**

- To highlight the importance of youth in rural South Australia, and particularly the agricultural show movement.
- To identify and encourage enthusiastic, skilful, industrious and unselfish young people.
- To give young people a forum to express their views through education and experience and develop closer links with the primary industries in South Australia.

#### **CONDITIONS:**

Entrants must:

- Apply for and complete the entry form.
- Agree to provide a copy of their curriculum vitae (CV) and an introductory letter for local, association and state final judging by the required date.
- Provide information indicating their reasons for applying for entry together with CV; indicating work experience, community participation and agricultural show involvement.
- Be residents of South Australia.
- Rural Ambassador must be aged 20 years and under 30 years as at the 1<sup>st</sup> of May 2026.
- Young Rural Ambassador must be aged 16 years and under 20 years on the 1<sup>st</sup> of May 2026.
- Be enthusiastic and knowledgeable about rural life and affairs and agricultural shows.

- As a state finalist consent for your name and contact details to be made available on the SA Country Shows website for show societies should they wish to contact you.
- Be able to spend the required time at the local show, association level finals and be available to attend the Royal Adelaide Show

Class 41 Rural Ambassador

- **\$150 donated by Gibb Brothers, JK Hagger & Sons & M Simpson**

Class 42 Young Rural Ambassador

- **\$50 cash donated by Natasha Dowling**

### **D - JAMESTOWN SHOW PERSONALITY**

CONVENER: Pam Staker 0488 353 258

#### **CONDITIONS:**

- Open to both Male and Female entrants
- Entries on Show Day, Sunday 5th October.
- Conducted in the Big Shed, check program for times.
- Judging will consider personality and general appearance and questions with Annabelle Homer from Voice It.
- Senior, Intermediate and Junior entrants will be judged, all prizes awarded after the QnA in the Big Shed.
- Junior and Intermediate entrants will be interviewed with set questions asked by the host.
- Senior entrants will be asked to give a 1 minute talk about themselves guided by the host.

Class 43 SENIOR (10 - 14 years)

- **1st \$30 cash donated by Miller Leese Financial Services**
- **2nd \$10 cash donated by Miller Leese Financial Services**

Class 44 INTERMEDIATE (7 - 9 years)

- **1st \$30 cash donated by Miller Leese Financial Services**
- **2nd \$10 cash donated by Miller Leese Financial Services**

Class 45 JUNIOR (4 - 6 YEARS)

- **1st \$30 cash donated by Miller Leese Financial Services**
- **2nd \$10 cash donated by Miller Leese Financial Services**





# SPARKS FARMING

OAKLEA PARK • MUNDUNEY • CALCANNIA

SPARKSFARMING.COM • ADMIN@SPARKSFARMING.COM

Local knowledge,  
National scale

Full auction services  
On-farm buying  
Forward contracts  
Wool pickups with our trucks  
Shed clean ups

**Cody Jones**  
0460 346 400  
HEAD OFFICE  
(08) 8341 0000

qualitywool.com



# DULCIE

Boutique accommodation  
that wraps around you like a warm  
hug, heartwarming, cosy and full of  
character just like nanna.

www.dulcie.com.au

# **E | NUTRIEN EWE**

## **HOGGET COMPETITION**

### **COMPETITION ON SUNDAY 5**

**th OCTOBER 2025**

**Entries close Monday 22nd September 2025 at 11.59pm**

**CONVENORS:** Braden Hagger 0459 220 009 | Tom Mummery 0415 771 589

Hoggets' to be delivered by 9am Sunday, 5th October 2025

#### **Online Entries ONLY via**

<https://showday.online/show/jamestown>

**\*Claims for livestock injuries carry a \$1,500 excess to be paid by**

**exhibitor if put through the "Society's Insurance". The competition will be split into a long and short wool category for judging purposes.**

The Sheep & Wool committee will be collecting data from each property such as bloodline, lambing months, lambing percentage and shearing date. This information will be received two weeks prior to the show and will be on display for judges, entrants and the general public. The pen of three hogget's will be judged on fleece weight, body weight, conformation and pen evenness. We encourage all entrants to attend a free AWI farmers Breakfast on Sunday morning, all welcome. The aim of the Ewe Hogget competition is to promote the different blood lines and styles of sheep in the local area. The pen will consist of 3 ewe hogget's from the property to be judged against other locals. The sheep will be shorn on Sunday 5th October. The fleece will then be weighed and together with micron data the figures will be on display. These elements combined with other key figures will determine a winning pen.

#### **CONDITIONS:**

- Entries need to be at the show ground by no later than 9am Sunday 5th October 2025
- Ewes must be tagged with NLIS compliant tags
- All sheep will stay on the show grounds to be displayed on Sunday afternoon and Monday until 4pm
- Sheep must be vendor bred
- Entries will be micron tested on site
- Ewes must have no more than two teeth and minimum of 6 months wool, wool may be over 12 months
- A minimum of one fleece donation per pen is required. All fleece donations go to the Jamestown Show Society. Please bring own wool pack if collecting the remaining fleeces.

- PIC numbers, vendor declaration and health statement must be presented with sheep on Sunday morning
- All entries to be received two weeks prior to the show
- All entrants are invited to attend the Farmers Breakfast – Sponsored by AWI on Sunday

## **E – HOGGET COMPETITION**

### **Registered Ewe Hoggets**

#### **Class 51 Best Pen – Long Wool**

- **1st Sash, \$350 cash donated by Nutrien Ag Solutions Jamestown, \$125 S.T. Reynolds Scanning pregnancy scanning voucher**
- **2nd Sash & \$150 cash donated by Nutrien Ag Solutions Jamestown.**
- **3rd Sash Sash & \$75 cash donated by Walkington Insurance**

#### **Class 52 Best Pen - Short Wool**

- **1st Sash, \$350 cash donated by Nutrien Ag Solutions Jamestown, \$125 S.T. Reynolds Scanning pregnancy scanning voucher**
- **2nd Sash & \$150 cash donated by Nutrien Ag Solutions Jamestown.**
- **3rd Sash Sash & \$75 cash donated by Walkington Insurance**

### **Commercial Ewe Hoggets**

#### **Class 53 Best Pen - Long Wool**

- **1st Sash, \$350 cash donated by Nutrien Ag Solutions Jamestown, \$125 S.T. Reynolds Scanning pregnancy scanning voucher**
- **2nd Sash & \$150 cash donated by Nutrien Ag Solutions Jamestown.**
- **3rd Sash Sash & \$75 cash donated by Walkington Insurance**

#### **Class 54 Best Pen - Short Wool**

- **1st Sash, \$350 cash donated by Nutrien Ag Solutions Jamestown, \$125 S.T. Reynolds Scanning pregnancy scanning voucher**
- **2nd Sash & \$150 cash donated by Nutrien Ag Solutions Jamestown.**
- **3rd Sash Sash & \$75 cash donated by Walkington Insurance**
- **Best Presented Pen Overall - as voted by judges -Sash & 200M Fencing Material donated by Mummery Ag**
- **Convenors Prize - Hogget Comp -Fishing Charter for 4 People donated by Leon Hams**

## 2025 NUTRIEN EWE HOGGET COMPETITION ENTRY FORM

Form must be completed when entering competition, please follow all entry guidelines.

Property Name	
Owner/Manager	
Postal Address	
Phone	
Email	
Number of Pens entered	
Section	
Bloodline of Ram	
Breed of Ewe	
Mulsed Status	
Classer	
Bloodline	
Soil Type	
Rainfall	
Lambing Percentage 2023	
Complete Drop 2023	
Retained	
Culled	
Week of Shearing	
Lambing Months	

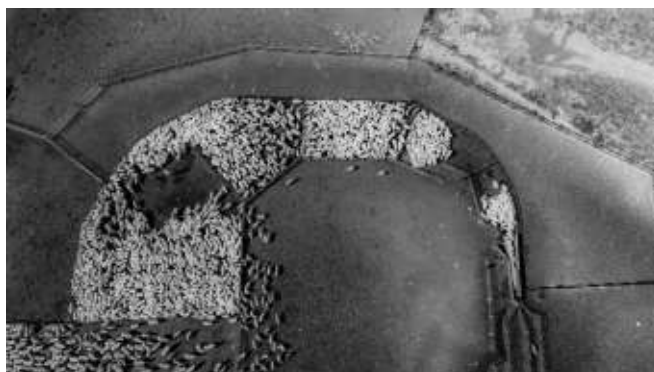
### CONDITIONS:

- Entries need to be at the show ground by no later than 9am Sunday 5th October 2025
- Ewes must be tagged with NLIS compliant tags
- All sheep will stay on the show grounds to be displayed on Sunday afternoon and Monday until 4pm
- A maximum of two entries per property
- Sheep must be vendor bred
- Entries will be micron tested on site
- Ewes must have no more than two teeth and minimum of 6 months wool, wool may be over 12 months
- A minimum of one fleece donation per pen is required. All fleece donations go to the Jamestown Show Society. Please bring own wool pack if collecting the remaining fleeces.
- PIC numbers, vendor declaration and health statement must be presented with sheep on Sunday morning
- All entries to be received two weeks prior to the show

# CCCOOPER&CO

SINCE FOOD • FODDER • FIBRE 1858

JAMESTOWN ♦ NARRUNG ♦ CANOWIE POLL MERINO ♦ COORABIE  
MADURA PLAINS



Employment opportunities available various times throughout the year [larissa@cccooperco.com.au](mailto:larissa@cccooperco.com.au)

**David Cooper 0417 896 772 ♦ Ali Cooper 0408 892 807 ♦ Larissa Leslie 0400 759 570**



## CANOWIE

♦ POLL MERINO ♦

FLOCK NO. 12 • EST. 1914

**BREEDING RAMS UNDER COMMERCIAL CONDITIONS TO  
MAXIMISE COMMERCIAL RETURNS**





# Nutrien

Ag Solutions®

## KLR

Looking after the community with locally based support for all your rural needs.

### LIVESTOCK

Tom Allen 0409 048 418  
Shannon Jaeschke 0437 909 130  
Cody Hounsell 0427 521 319  
Grace Teate 0439 552 078

### ADMINISTRATION - LIVESTOCK

Nikki Rogers 08 8664 1108

### ANIMAL HEALTH

Daniel Schuppan 0477 315 931

### AGRONOMY

Steve Richmond 0417 446 089  
Joe Batten 0467 717 019  
Wil Arthur 0451 659 208

### INSURANCE

Anthea Verall 0419 487 876

### WOOL

Adrian Dewell 0427 975 716

### MERCHANDISE

Peter Francis 0408 825 298  
Georgia Smart 0418 361 730

### FINANCE

Brian Sampson 0428 318 539  
Linda Thelning 0418 807 673

### REAL ESTATE

Peter Francis 0408 825 298

• 29 MANNANARIE RD, JAMESTOWN 5491 •  
P 08 8664 1108 • F 08 8664 1149  
• [www.NutrienAgSolutions.com.au](http://www.NutrienAgSolutions.com.au) •



UNWIND • CONNECT • EXPLORE



### ACCOMMODATION

Wake to the sounds of birdsong under towering red gums, set in the heart of Jamestown. Meet friends old and new at The Hub, our striking kitchen and shared space, or browse our gift shop.

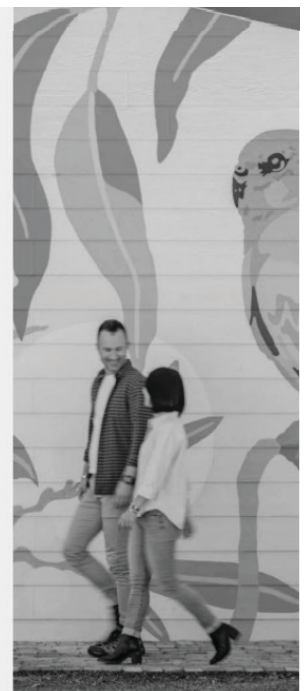
Cabins, self-contained villas and caravan/camping sites.

We can't wait to host you at The Park!

**08 8664 0077**

W: [www.theparkjamestown.com.au](http://www.theparkjamestown.com.au)

E: [hello@theparkjamestown.com.au](mailto:hello@theparkjamestown.com.au)



# **F | SCARECROW**

## **COMPETITION**

**Entry Fee** - Free

**Entries Close** - Friday 3rd October

**Entries Due** - Scarecrows can be delivered from 26th of September to Stacey Pavillion

**Convenor** - Rosemary O'Leary Mb: 0458 500 967

**Judging Commences** - Saturday 4th October

**First Prize \$150, Second \$100, Third \$50**

Ribbon for First, Second and Third

Donated by Shellie Shoes and Dr RL Conway

### **Conditions of Entry**

1. Scarecrow to be made by a group of children
2. The Scarecrow Competition is a cross age competition can be made by a combination of preschool, childcare, primary & high school (up to Yr 10), home schools and after school hours care children.
3. Scarecrow must be self-supporting with a strong support base.

4. Scarecrow must fit on an area no bigger than 60cm x 60cm.
5. The Community Garden will chose a scarecrow to put into their garden.
6. Judges will take into consideration the following: Artistic merit, originality, workmanship, attention to detail
7. Your scarecrow will need a name.

Class 1700 Scarecrow

**Connecting Regional SA 'Virtually Everywhere'**



South Aussie owned & FREE-To-Read [www.greatersa.com.au](http://www.greatersa.com.au)



**OPEN WEEKDAYS 8:30am-5:00pm**

*For all your chemical, fertiliser,  
seed, fencing, rural merchandise,  
water, animal health &  
stock/pet feed requirements.  
Your local YETI stockist.*

**4482 Appila Road  
Jamestown SA 5491  
Ph: 08 8664 1907**

**Mark Smallacombe: 0488 535 750  
Susanne Hogan: 0438 866 414  
Emily Seabrook: 0439 751 976  
Paul Couzner: 0409 250 606**



**Shellie's  
Shoes**

shoes & fashion accessories  
for everyone and all occasions

67 Ayr St, Jamestown SA 5491

**PH: 08 8664 0439**



**Do you want to build a scarecrow?**

**Prizes for 1<sup>st</sup>,  
2<sup>nd</sup> and 3<sup>rd</sup>**

# **Jamestown Show Scarecrow Competition Oct 5<sup>th</sup> - 6<sup>th</sup> 2025**

## **Entry Rules**

- To be made by a group of children
- Cross aged competition can be a combination of either preschools, childcare, primary and high school (up to Yr 10), home schools and after school hours care children
- Scarecrows must be self supporting
- Fit in 60 x 60 cm space
- Name your scarecrow
- Community Garden will choose a scarecrow for their garden



## **TO ENTER**

**Entries close 2pm  
Friday 3<sup>rd</sup> October  
Entries can be  
delivered from 25<sup>th</sup>  
September to Friday  
3<sup>rd</sup> October 2pm to  
Stacey Pavilion Office**

**SEE SHOW BOOK FOR ANY OTHER INFORMATION**

# G | WOOL

**CONVENOR:** Bill Blake 0408 858 628 | John Staker  
**STEWARDS:** B K Napper | Craig Simpson | Annabel Porter

**NASA Aggregate Trophy:**

Please read eligibility terms and conditions

**Please Note:**

Entry for Junior Judging are in Section C

**Online Entries/Membership via**

<https://showday.online/show/jamestown>,  
closing Date Friday 3rd October

**Manual Entry** either in Show Book, online at  
<https://jamestownshow.com.au> or email  
[entries@jamestownshow.com.au](mailto:entries@jamestownshow.com.au)

**PRIZES:** 1st \$20, 2nd \$15 & 3rd \$5

**Winners of Champion Ram and Ewe Fleeces will be eligible to enter the Country Wool Show conducted at the Royal Adelaide Show in 2026.**

**CONDITIONS:**

- **Wool to be skirted & true to Breed.**
- Points: First 5, Second 3, Third 1.
- Exhibits to be staged by 10 am on Monday 6th October 2025. To be judged on commercial value.
- All fleeces exhibited for competition must have been shorn from sheep bred and owned by exhibitor.
- With respect of ownership of flocks, any individual, partnership, syndicate or limited liability company is regarded by this Society as being one owner and flocks cannot be divided for the purpose of exhibiting at the Society's Show, between partners or shareholders of a firm owning sheep.
- Exhibitors are notified that the Society has requested the judge not to award prizes for any fleece or fleeces exhibited, which in his/her opinion, shows more than 13 months growth of wool.
- Stewards are asked to withdraw from the vicinity of the judge whilst classes in which they are exhibiting are being judged.

## G - WOOL

### REGISTERED CLASSES

- Class 71 Strong Wool merino ram fleece  
1 year's growth, shorn from ram of any age
- Class 72 Medium Wool merino ram fleece  
1 year's growth, shorn from ram of any age
- Class 73 Strong Wool merino ewe fleece  
1 year's growth, shorn from ewe of any age
- Class 74 Medium Wool merino ewe fleece  
1 year's growth, shorn from ewe of any age
- **Champion Ram Fleece (registered) Sash and \$25 trophy donated by R G & E R Keatley**
  - **Champion Ewe Fleece (registered): Sash donated by R G & E R Keatley, \$25 Trophy donated by C J & D J Bretag**
  - **Grand Champion Fleece (registered) - \$100 Cash & Sash donated by Ruth Robinson**

### UNREGISTERED CLASSES

- Class 75 Strong Wool merino ewe fleece  
1 year's growth, shorn from ewe of any age
- Class 76 Medium Wool merino ewe fleece  
1 year's growth, shorn from ewe of any age
- **Champion Ewe Fleece (un-registered) - \$25 and Sash donated by A B & M C Tohl & Son**
- Class 77 Ram fleece, any age, any count
- **Champion Ram Fleece (un-registered) - \$25 and Sash donated by A & T Dewell**
- Class 78 Lamb fleece (Merino) autumn drop. To be judged on commercial value
- Class 79 Most true to type ewe or wether fleece (registered or unregistered). To be judged on trueness to type plus weight
- **Grand Champion Fleece (un-registered): - \$100 & Sash donated by Quality Wool**
  - **Supreme Champion Fleece (All classes eligible) - Gordon Crawford Memorial \$200 & Sash donated by Crawford Family**



# H | WOOL HANDLING

**CONVENOR:** Shannon Donoghue 0417 741 674 |  
Russell Sleep 0428 376 141

**Competition held Sunday 5th October 2025, briefing  
at 9:45am to start at 10:00am**

## ONLINE ENTRIES ONLY

**Online Entries/Membership via**

<https://showday.online/show/jamestown>

**Closing Date:** Monday 22nd September 2025

## Entry Fee:

Novice - Free (Covered by AWI)

Senior - \$55

Open - \$60

## Prizes:

Novice: 1st \$300 2nd \$200 3rd \$100

Senior: 1st \$300 2nd \$200 3rd \$100

Open: 1st \$400 2nd \$300 3rd \$200

## H - WOOL HANDLING

Class 81 Novice

Novice Shearing 9:30am draw

Class 82 Senior

Senior Shearing 10am draw

Class 83 Open

Open Shearing 10:30am draw



Restorations • New Builds • Extensions  
QUALITY WORK AT COMPETITIVE PRICES

Bob Case

0407 282 390 • [flindersbuilding@bigpond.com](mailto:flindersbuilding@bigpond.com)

JAMESTOWN AND LOCAL AREAS

BLD 303502



[f AustralianWoolInnovation](#) [X woolinnovation](#) [in AustralianWool](#) [@AustralianWool](#)

**WOOL.COM | AWI HELPLINE 1800 070 099**

AWI invests in research, development, innovation and marketing activities along the global supply chain for Australian wool. AWI is grateful for its funding, which is primarily provided by Australian woolgrowers through a wool levy and by the Australian Government which provides a matching contribution for eligible R&D activities. © 2025 Australian Wool Innovation Ltd. All rights reserved. GD5434



LEARN MORE

# I | SPORTS SHEAR

**CONVENOR:** Tony Bray 0427 652 057 | Matthew Scharkie 0439 843 527

## ONLINE ENTRIES ONLY

### Online Entries/Membership via

<https://showday.online/show/jamestown>

**Closing Date:** Monday 22nd September 2025

Competition held Monday 6th October 2025

### ENTRY FEES:

#### Entry Fee:

- Novice - Free (Covered by AWI)
- Intermediate - \$50
- Senior - \$55
- Shear Magic Open - \$60
- Blades - \$60

Conducted in accordance with rules from SPORTS SHEAR SA INC

## I - SPORTS SHEAR

Class 91 Novice Shearing. 9:30 am draw

Class 92 Intermediate Shearing. 10 am draw

Class 93 Senior Shearing. 11.30 am draw

Class 94 Shear Magic Open  
Championship: 11.30 am draw

Class 95 Blade Shearing 11.30 am draw

### Sponsored By:



# J | SPEED SHEAR

**CONVENORS:** Dan Porter 0467 034 284 | Ben Rolph 0483 157 126

### Entries accepted on show day.

Every speed shear entrant receives a singlet.

Commences 2:30pm Sunday 5th October 2025

### ENTRY FEES:

Novice - \$50  
Intermediate - \$55  
Open - \$60

### PRIZES:

- Approx. \$6,000 in Prize Pool

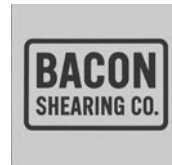
## J - SPEED SHEAR

Class 101 Novice shearing

Class 102 Intermediate Shearing

Class 103 Open Shearing

### Sponsored By:



AC Thomas Drillers



## NEW SEASON OATEN HAY CONTRACTS AVAILABLE

### WHY DEAL WITH GILMAC?

➔ GUARANTEED MINIMUM PRICES

➔ PROMPT PAYMENT

➔ 35+ YEAR HISTORY OF 'DOING WHAT WE SAY WE WILL DO'

➔ BRAND OF CHOICE IN THE MARKET

➔ PROUDLY 100% AUSTRALIAN FAMILY OWNED BUSINESS SUPPORTING AUSTRALIAN FARMERS

[www.gilmac.com.au](http://www.gilmac.com.au)

### OUR EASTERN LOCATIONS

**Victoria**

St Arnaud  
3763 Charlton-St Arnaud Road,  
St Arnaud, Vic, 3478  
[starnaud@gilmac.com.au](mailto:starnaud@gilmac.com.au)  
(03) 5495 1100

Goornong  
Lot 15 Midland Hwy, Cnr Comer Lane, Goornong, Vic, 3557  
[goornong@gilmac.com.au](mailto:goornong@gilmac.com.au)  
(03) 5432 2422

**South Australia**

Balaklava  
305 Wedding Road, Balaklava, SA, 5461  
[balaklava@gilmac.com.au](mailto:balaklava@gilmac.com.au)  
(08) 8862 1200



**SOLAR**  
**WATER PUMPS**  
AUSTRALIA

Box 419, KAPUNDA SA 5373  
9 Mellor Place, KAPUNDA SA 5373  
08 8566 3876  
office@solarwaterpumpsaustralia.com.au  
www.solarwaterpumps.com.au



**Solar Water Pumps Australia are the leaders in the design, installation and service of all solar water pumping equipment with over 30 years of experience. We are proud to continue our support of the Jamestown Show and the rural sector across Australia.**

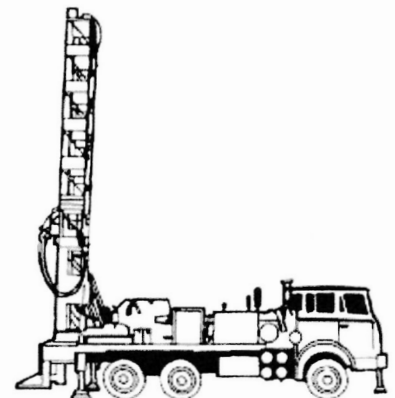
**Call the SWPA team to discuss your next water pumping project.**

# **A.C. THOMAS DRILLERS S.A.**

(ESTABLISHED 60 YEARS)

**28 Creek Street  
Jamestown SA 5491**

**Phone: 08 8664 1547  
Mobile: 0447 789 218**





**QUALITY SHEARING SOLUTIONS**

[www.shearmagicsa.com](http://www.shearmagicsa.com)



**M U M M E R Y**

**A G S E R V I C E S**

RURAL FENCING | LIVESTOCK  
FARMING | WATER INFRASTRUCTURE

**TOM 0415 771 589**

# BACON SHEARING CO.

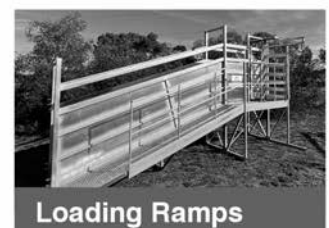
**SHEARING | CRUTCHING | CRUTCHING TRAILER HIRE**

Professional and reliable shearing service across the Mid North.

**“YOUR FLOCK, OUR FOCUS”**

**PHONE SAM - 0448 377 240**

*Agricultural products  
for pastoralists  
by pastoralists.*



100% Australian owned and operated.  
Designed, tested and refined by pastoralists.



0459 501 892



660 Pawson Ave., Irymple, VIC 3498



[pastoralpanels.com.au](http://pastoralpanels.com.au)



# STACEY PAVILION EXHIBITOR GUIDELINES

Exhibitors, please take time to read the following guidelines and additional information at beginning of each section you are entering. For further details please contact the Section Convenor.

**Show office hours 10am – 2pm Monday 22<sup>nd</sup> September 2025 until Monday 6<sup>th</sup> October 2025.**

## ENTRY REGISTRATION

- All entries in junior sections are free
- Adult entries are 50c per entry
- No exhibit to compete in more than one class in Stacey Pavilion
- **Online Entries/Membership** via <https://showday.online/show/jamestown>
- **Manual Entry** either in Show Book or online at <https://jamestownshow.com.au> or at the Show Office from Monday 22nd September 2025.
- Manual entries can be emailed to [entries@jamestownshow.com.au](mailto:entries@jamestownshow.com.au) or delivered to Show Office.
- **Closing Dates:**
  - **Pavilion** | Friday 3rd October 3:30pm
  - **Poems & Stories** | 19th September @3:30pm
  - **Photography** | 29th September 2025 11:59pm
  - **Home Brew** | 3rd October 2025 3:30pm
- **NO LATE ENTRIES TAKEN**
- Entrants will be emailed or can collect class tickets from Show office which need to be firmly attach to each of their exhibits.

## DELIVERY OF EXHIBITS TO PAVILION

- **Photography** early closing dates (as stated above). Exhibits must be delivered by the 29<sup>th</sup> September between 10am-2pm at the Show Office or by prior arrangement with the Entries Coordinator Sharon Hagger 0429641027, as judging is completed prior to the show.
- **Junior Art and Craft** (Q1430 to 1470)
  - All exhibits **MUST** be delivered to Stacey Pavilion between **10.00am – 3:00pm Saturday 4<sup>th</sup> October** or
  - During office hours Monday 22<sup>nd</sup> September 2025 to Friday 3<sup>rd</sup> October 2025.
- Exhibits, (except Photography/Home Brew/Poems & Stories), can be dropped into their Sections in Stacey Pavilion from Wednesday 1st October 2025 during office hours.
- Alternatively, exhibits can be delivered to their Section in Stacey Pavilion on Saturday 4<sup>th</sup> October 2025 from 1:00PM – 3:00PM OR Sunday 5<sup>th</sup> October 2025 from 8:30AM – 10AM. Except Junior Art & Craft (as per above)
- **Exhibits will not be accepted outside of these hours.**
- ALL EXHIBITS must have a class ticket securely attached by the exhibitor.
- Officials take no responsibility for lost exhibits due to tickets not attached properly.

## OPERATION OF STACEY PAVILION SHOW DAYS

- Stacey Pavilion will be OPEN to ALL EXHIBITORS from 8:30AM – 10AM on Sunday 5<sup>th</sup> October 2025. This will be strictly adhered to.
- Judging commences at 10:30AM.
- Stacey Pavilion will be OPEN to the public at 1:00PM Sunday 5<sup>th</sup> October 2025.

## PRIZE MONEY

- Prize money can be collected from Show Office Monday 6<sup>th</sup> October 2025 from 9:00AM-3:00PM,
- If prize money is not collected by 3:00PM Monday 6<sup>th</sup> of October 2025 it will be assumed the prize money is to be donated back to the Jamestown A, H & F Show Soc Inc.

## COLLECTION OF EXHIBITS

- Exhibits to be collected from Stacey Pavilion on Monday 6<sup>th</sup> October 2025 between 3:00PM-3:30PM
- Under no exception are public to open gates in pavilion, staff will have these open by 3:00PM
- No responsibility will be taken for any exhibits left in the Pavilion after 3:30PM, Monday 6<sup>th</sup> October.

## IN MEMORY

The Stacey Pavilion committee would be honoured to display items (including photograph) from families who wish to place an exhibit of a family member who has passed away in the preceding year, and was a volunteer or exhibitor in Stacey Pavilion. These items will not be included for judging.

# **K | POEMS AND STORIES**

## **CONVENOR:**

Kaye Bottrall 0417 812 915

Free Entry for all exhibitors

## **Entries close:**

**3:30PM Friday September 19th, 2025.**

**Entries will be collected from Jamestown Community School and ST James School on closing day**

**or may be emailed to Kaye Bottrall -  
tnkbottrall@activ8.net.au**

## **JUDGING WILL OCCUR IN THE WEEK PRIOR TO THE SHOW**

All work must be presented in an easily read font e.g. Arial, no smaller than font size 12pt.

Maximum two pages per entry.

**DO NOT WRITE YOUR NAME ON THE ENTRY**

*The Convenor will enter your entries into ShowDay Online*

**Entries must be the work of the exhibitor**

## **OPEN - POEMS AND STORIES**

Class 1601 Poem any theme

Class 1602 Narrative any subject

Class 1603 Poem or Narrative: topic  
Jamestown Show

## **13-16 YEARS - POEMS AND STORIES**

Class 1604 Poem any theme

Class 1605 Narrative any subject

Class 1606 Poem or Narrative: topic  
Jamestown Show

## **9-12 YEARS - POEMS AND STORIES**

Class 1607 Poem any theme

Class 1608 Narrative any subject

Class 1609 Poem or Narrative: topic  
Jamestown Show

## **5-8 YEARS - POEMS AND STORIES**

Class 1610 Poem any theme

Class 1611 Narrative any subject

Class 1612 Poem or Narrative: topic  
Jamestown Show

- **Best exhibit classes 1610-1612 - poems & stories - \$10**
- **Best exhibit classes 1607-1609 - poems & stories - \$10**
- **Best exhibit classes 1604-1606 - poems & stories - \$10**
- **Best exhibit classes 1601 –1603 - poems & stories - \$10**

**Prizemoney: First \$3, Second \$2, Third \$1**

**Donated by TJ & H Lehmann, P Staker, K Bottrall**



# WEBB'S TYRE SERVICE

## ***DUNLOP***

53 COCKBURN ROAD, JAMESTOWN, PH: 08 8664 1328

DYLAN - 0473 624 737

EMAIL - ADMIN@WEBBSTYRES.COM.AU

Servicing the Mid North since 1968 with over 50 years experience

ON FARM SERVICE - with a mobile fully equipped truck

Sell all tyres: Car, 4x4, SUV, truck and all Agriculture tyres

Sell all quality brands of tyres | Vulcanising & Major repairs

Exide Batteries | Wheel Alignments

**COME SEE US AT WEBB'S**

**WARDLE**  
**Co.**  
Real Estate & Livestock

### YOUR LOCAL REAL ESTATE AGENT

We have agents in: Our services include:

- |                 |                               |
|-----------------|-------------------------------|
| • Jamestown     | • Appraisals                  |
| • Peterborough  | • Residential Sales/Marketing |
| • Crystal Brook | • Rural Sales/Marketing       |
| • Port Pirie    | • Property Management         |
| • Roxby Downs   | • Leasing                     |
| • Maitland      | • Auctions                    |
| • Broken Hill   | • Clearing Sales              |
| • Spalding      | • Livestock Sales/Marketing   |
| • Clare         |                               |
| • Wilmington    |                               |
| • Kadina        |                               |
| • Wallaroo      |                               |
| • Moonta        |                               |

www.wardleco.com.au | **08 8664 1599**

Rynne's  
**HOME**  
Hardware & Sports



Benton General Builders

QUALITY NEW HOMES & RENOVATIONS

**JAMESTOWN**



CHRIS: 0407 973 227

bentonbuilders@bigpond.com

www.bentonbuilders.com.au

# **L | FRUITS, NUTS,** **VEGETABLES, EGGS,** **HONEY**

## **CONVENER:**

**Entries close:** Friday 3rd October 2025.

**Entry fee:** 50¢ per entry

**Prize money:** First \$3, Second \$2, Third \$1.

**Points:** First 5, Second 3, Third 1.

**PLEASE READ STACEY PAVILION GUIDELINES**

## **ADDITIONAL GUIDELINES**

- Show eggs should not be polished or treated in any way. Large egg weight 55-61 gm
- All nuts in classes 11-15 to be in open containers

## **L - FRUIT & NUTS**

Class 1001	Five grapefruit
Class 1002	Collection of citrus fruits of three varieties
Class 1003	Three navel oranges
Class 1005	Three Valencia oranges
Class 1006	Three mandarin oranges
Class 1009	Three lemons, to be judged for juice
Class 1010	Three lemons, to be judged for peel
Class 1011	Almonds in shell, hard. 500 g
Class 1012	Almonds in shell, soft, 500 g
Class 1013	Almond kernels, 200 g
Class 1014	Walnuts in shell, 500 g
Class 1015	Walnut kernels, 200 g
Class 1016	Dried Fruit in a jar up to 500g in size

- **Highest points Classes 1001-1016 - \$20 donated by Annie Kelly**

## **L - VEGETABLES**

Class 1025	One cabbage
Class 1026	One cauliflower
Class 1027	One broccoli
Class 1028	Five purple-top turnips
Class 1029	Five white-top turnips
Class 1030	Five Swede turnips

Class 1031	Five turnips any variety
Class 1032	Five parsnips
Class 1033	Five carrots
Class 1034	Five sticks rhubarb, cherry variety
Class 1035	Five sticks rhubarb, other than cherry
Class 1036	Five red beets
Class 1037	Collection of radishes, not less than 3 varieties, five in a bunch
Class 1038	250g peas in pod
Class 1039	250g broad beans in pod
Class 1040	Bunch salad onions
Class 1041	Bunch green onions
Class 1042	Three white onions
Class 1043	Three brown onions
Class 1045	Collection of herbs, not less than six varieties
Class 1046	One lettuce
Class 1048	Bunch silver beet, not less than 50 mm in diameter at tie
Class 1049	Bunch spinach, not less than 50 mm in diameter at tie
Class 1050	One pumpkin any variety
Class 1051	One butternut pumpkin
Class 1053	2 kg potatoes
Class 1057	Five Radishes
Class 1058	Vegetable not included elsewhere

- **Highest points Classes 1025 - 1058 - \$30 donated by Voumard Lawyers**

## **EGGS & HONEY**

Class 1065	Six hen eggs white shell, large
Class 1066	Six hen eggs, brown shell, large
Class 1067	6 Duck Eggs
Class 1068	Three eggs not listed of a single variety
Class 1070	One collection of 6 eggs, two of a kind
Class 1071	One jar of honey, any type. 500 g

- **Highest points Classes 1065 - 1071 - \$20 John & Mary Toholke Memorial donated by the Toholke Family**

## L - JUNIOR EGGS

**Entries close:** Friday 3rd October 2025.

**Free Entry,**

**Prize Money** 1st \$3, 2nd \$2, 3rd \$1.

### PLEASE READ STACEY PAVILION GUIDELINES

#### 14 YEARS & UNDER

Class 1073 Six hen eggs, white shell, large

Class 1074 Six hen eggs, brown shell, large

Class 1075 One collection of 6 eggs, two of a kind

- **Highest Points Classes 1073-1075 \$10**  
**Voucher donated by Healthsave Pharmacy Jamestown**

#### 8 YEARS & UNDER

Class 1076 Six hen eggs, white shell, large

Class 1077 Six hen eggs, brown shell, large

Class 1078 One collection of 6 eggs, two of a kind

- **Highest Points Classes 1076-1078 - \$10 \$10**  
**voucher donated by Healthsave Pharmacy Jamestown**



## REDDEN BROS. PTY LTD

Licence No. G19148 ABN 67 007 548 003

**15 OD5 RD JAMESTOWN**  
**Phone: 08 8664 0660**  
Email: reddenservices@bigpond.com

**FOR ALL YOUR SHED BUILDING NEEDS | KIT SHEDS AVAILABLE  
OR ERECTED FOR YOUR CONVENIENCE**



## NOW STOCKING



**WELDING  
CONSUMABLES TO SUIT  
ALL TYPES OF MACHINES**

INC MIG,  
TIG & ARC



**UNC - UNF - METRIC  
NUTS BOLTS  
WASHERS  
NYLOC NUTS &  
SPRING WASHERS  
5MM TO 24MM  
1/4" TO 1"**

**GALV RHS IN VARYING  
SIZES & THICKNESS**

- ROUND PIPE • ANGLES
- FLATS • ROUND BAR
- C-SECTION  
& TOP HAT

CUTTING AVAILABLE

### UNI-LOCK INDUSTRIAL AND TRANSPORTATION HARDWARE



## Brows, lashes, skin + more!

0412173045 @brittsbeautybar  
32 Ayr Street, Jamestown



# **M | POT PLANTS,** **FLORAL ART, CUT** **FLOWERS**

**CONVENOR:** Mary Hagger 0428 540 744

**STEWARD:** Zara Nicholls, Jessica Robinson

**Entries close:** Friday 3rd October 2025.

**Entry Fee:** 50c per entry.

**Prize money:** First \$3 Second \$2 Third \$1.

**Points:** First 5, Second 3, Third 1.

## **PLEASE READ STACEY PAVILION GUIDELINES**

### **ADDITIONAL GUIDELINES**

- All plants in groups to be identified with a name tag i.e. written on a pop stick.
- Once a plant has been placed by exhibitor, at Convenors or steward's direction, no other exhibitor is to touch the pot plant. If this occurs, the offending exhibitor will be asked to leave Stacey Pavilion.
- All flowers and pot plants must be at the Pavilion no later than 10am Sunday.
- Pots & Baskets to be no larger than 35 cm in diameter. (\*unless stated otherwise in section)
- Outer pots and saucers allowed
- Distinct means different colours or types.

## **M - PLANTS IN POTS & BASKETS**

- Class 1080 Collection of three ferns in baskets, distinct varieties
- Class 1081 Collection of three ferns in pots, distinct varieties
- Class 1082 One maidenhair fern any variety
- Class 1083 One fern any other variety
- Class 1084 Staghorn/elkhorn (on board - no size limit)

- **Highest points Classes 1080–1084 \$20 Voucher donated by Rynne's Hardware**

- Class 1085 Collection of three pot plants in bloom, distinct varieties
- Class 1086 One pot plant in bloom
- Class 1087 One pelargonium/geranium in bloom
- Class 1088 Potted Herb (one or more)

- Class 1089 One flowering Australian Native max 20cm pot (boronia/euphorbia's)
- Class 1090 One fuchsia in pot
- Class 1091 One cyclamen
- Class 1092 One pot plant, un-enumerated/ miscellaneous
- Class 1093 Bigger pot plant (any variety up to 50cm)
- Class 1094 Hydroponic/propagation
- Class 1095 Terrarium/bottle garden (one or more plants)

- **Highest points Classes 1085-1095 - \$20 Olive Metcalf Memorial donated by E Robinson & S Eckert**

- Class 1096 Two foliage plants, green, distinct varieties
- Class 1097 Two foliage plants, variegated, distinct varieties
- Class 1098 One foliage plant
- Class 1099 One palm
- Class 1100 One climbing pot plant (must have own trellis)

- **Highest Points Classes 1095-1100 - \$20 Julie Humphris Memorial donated by Craig Humphris**

- Class 1101 One flowering annual
- Class 1102 One African violet, in bloom
- Class 1103 One hanging basket (excluding ferns)
- Class 1104 Window box (up to 45cm)
- Class 1105 Collection of plants suitable for rockery, growing in container not exceeding 45cm diameter
- Class 1106 Bonsai - any type

- **Highest points Classes 1102 - 1111 - \$20 Phyl Klem Memorial donated by Averil Cooper**

## M - ORCHIDS IN BLOOM

- Class 1115 One standard cymbidium  
Class 1116 One intermediate cymbidium  
Class 1117 One miniature cymbidium  
Class 1118 One Australian native orchid  
Class 1119 One paphiopedilum (slipper)  
Class 1120 One cattleya  
Class 1121 One un-enumerated orchid

- **Highest points Classes 1115 – 1121 - \$20 Mrs BE Eckert Memorial Donated by K & S Eckert**
- **Champion Orchid - \$20 and Ribbon Mrs DA Riddle Memorial Donated by J Filmer**

## M - SUCCULENT & CATCI

- Class 1122 A succulent  
Class 1123 A cacti  
Class 1124 A groundcover succulent  
Class 1125 A groundcover cacti  
Class 1126 A hanging succulent  
(must be able to be hung)  
Class 1127 A hanging cacti  
Class 1128 Cacti/succulent garden (can be mixture)  
not less than 3 variants not exceeding 45cm diameter

- **Highest points Classes 1122 – 1128 - \$20 donated by H Catt**
- **Aggregate points Classes 1080 - 1128 - \$75 Alwyn Wehrmann Memorial & perpetual trophy donated by Reinhold Wehrmann**

## M - JUNIOR POT PLANTS

**Free Entry,**

**Prize money** 1st \$3, 2nd \$2, 3rd \$1

**Entries close:** Friday 3rd October 2025.

### UNDER 14 YEARS

- Class 1129 Growing plant, one, foliage  
Class 1130 Growing plant, one, in bloom  
Class 1131 Growing bulb, one  
Class 1132 Succulent and/or cactus, one  
Class 1133 Succulent and/or cactus, garden  
(can be mixed 3 or more plants)  
Class 1134 Plant in alternative container  
e.g. boot, mug, teapot

- **Highest points Classes 1129 - 1135 - \$10 donated by Rynne's Hardware**

## M - FLORAL ARRANGEMENTS

**CONVENOR:** Rosemary O'Leary 0458 500 967

**STEWARD:** Chris Catt

**Entries close:** Friday 3rd October 2025.

**Entry Fee** 50 c per entry.

**Prize money:** First \$3, Second \$2. Third \$1.

**Points allotted:** First 5, Second 3, Third 1.

### PLEASE READ STACEY PAVILION GUIDELINES

- Class 1136 Arrangement in a teacup  
Class 1138 Arrangement using bark or wood with plant material  
Class 1139 Posy of flowers, any colour (not to exceed 200 mm or 8")  
Class 1141 Arrangement of Sweet Peas no foliage  
Class 1144 Arrangement of flowers, with foliage  
Class 1148 Arrangement in an unusual container

- **Highest points Classes 1136 – 1148 - \$20 Mrs I G Moore Memorial donated by G & L Moore**

## M – JUNIOR FLORAL ARRANGEMENTS

**Free Entry,**

**Prize money** 1st \$3, 2nd \$2, 3rd \$1

**Entries close:** Friday 3rd October 2025.

## M - 9 - 14 YEARS

- Class 1150 Arrangement of Flowers  
Class 1151 Miniature garden - not to exceed 40cm in diameter  
e.g. fairy/dinosaur/gnome/mini beast/space etc  
Class 1152 Posy in an egg cup  
Class 1153 Presentation Posy  
Class 1154 Animal of choice using dried garden matter  
e.g. gum nuts, wood, leaves, sticks etc  
Class 1155 Saucer of flowers in sand - no sand showing

- **Highest points Classes 1150 – 1155 \$10 voucher donated by Rynne's Hardware**

## M - 8 YEARS & UNDER

- Class 1156 Saucer of flowers in sand - no sand showing
- Class 1157 Vegetable and or fruit sculpture
- Class 1158 Flowers in a tea cup
- Class 1159 Miniature garden - not to exceed 40cm in diameter  
e.g. fairy/dinosaur/gnome/mini beast/space etc

- **Highest points Classes 1156 - 1159 - \$10 Olive Wilkins Memorial donated by Jenny Hall**

## M - CUT FLOWERS ALL-COMERS CLASS

**CONVENOR:** Deb McCarthy 0409 700 535

**STEWARDS:** Sam Wytkamp, Anne Redden, Letitia Rattley and Zoe Rattley

**Entries close:** Friday 3rd October 2025.

**Entry Fee** 50 c per entry.

**Prize money:** First \$3, Second \$2. Third \$1,

**Points allotted:** First 5, Second 3, Third 1.

### PLEASE READ STACEY PAVILION GUIDELINES

#### ADDITIONAL GUIDELINES

- Flower stands and tubes/bottles will be provided by the Society for all cut flowers, and these must be used by exhibitors. Distinct means different colours or types of. Roses in bud - may have some colour showing, NO petals to be unfurling.

- Class 1160 Three cut roses, not buds distinct colours
- Class 1161 One cut rose, not bud
- Class 1162 Three cut rose buds, distinct colours
- Class 1163 One cut rose bud
- Class 1164 Miniature rose - single bloom
- Class 1165 Miniature rose - multiple bloom
- Class 1166 Collection of 6 cut flowers. Distinct
- Class 1171 Collection of 3 cut flowers. Distinct - White or Cream
- Class 1172 Collection of 3 cut flowers. Distinct - Lemon or Yellow
- Class 1173 Collection of 3 cut flowers. Distinct - Red or Orange

- Class 1174 Collection of 3 cut flowers. Distinct - Blue or Purple
- Class 1175 Collection of 3 cut flowers. Distinct - Pink or Cerise
- Class 1182 Three pansies, distinct colours
- Class 1183 Three pansies, fancy varieties, distinct colours
- Class 1184 One pansy
- Class 1185 One pansy, fancy variety
- Class 1191 Three ranunculi, distinct colours
- Class 1192 Three anemones, distinct colours
- Class 1194 Three bulbous, tuberous or rhizome flowers.  
3 distinct varieties one cut of each Flower - bulb, corm or rhizome not mentioned  
(No orchids)
- Class 1195 Three stocks, double, distinct colours
- Class 1196 One stock, double
- Class 1197 One camellia
- Class 1198 Three tulips
- Class 1201 Three distinct colours or type of sweet peas in one bottle
- Class 1203 Three cuts sweet peas in one bottle - same colour
- Class 1210 One carnation (exhibitors to state the variety of carnation where possible)
- Class 1212 Three violas, distinct colours
- Class 1213 One viola
- Class 1214 One antirrhinum
- Class 1215 One dwarf antirrhinum
- Class 1216 Three spikes aquilegia, short stem
- Class 1217 Three bearded iris, different colours
- Class 1218 One bearded iris
- Class 1219 One bearded iris dwarf
- Class 1220 Three Dutch iris
- Class 1221 One Dutch iris
- Class 1225 Three calendulas, distinct colours
- Class 1226 Three ivy geraniums, distinct colours
- Class 1227 Three geraniums, single or double, different colours
- Class 1228 One lily
- Class 1229 Three Iceland poppies, distinct colours, short stems

- Class 1230 One Iceland poppy, short stem
- Class 1231 Three marguerite daisies any colour
- Class 1232 Three daisies, any other variety
- Class 1234 Three flowers, distinct species of any one colour
- Class 1235 Six flowers, distinct species of one colour
- Class 1236 Variegated foliage, one cut
- Class 1237 Foliage, three cuts, distinct varieties
- Class 1239 Shrub, Tree or Climber in Flower - one cut
- Class 1240 Australian native in bloom, one cut
- Class 1241 Australian natives in bloom. three distinct, one cut of each
  - **Champion Cut Rose - \$20 donated by Rose Society of South Australia**
  - **Champion Pansy - \$10 donated by TJ & H Lehmann**
  - **Champion Sweet Pea - \$10 Mrs EA Moore Memorial donated by G & L Moore**
  - **CHAMPION IRIS - \$10 donated by Tash Downing**
  - **Best Exhibit Classes 1160 - 1241 - \$15 donated by J Daly**
  - **Aggregate points Classes 1160 - 1241 Cut Flowers - \$30 Liz Lloyd Memorial donated by Gary Lloyd**

## M - JUNIOR CUT FLOWERS

**CONVENOR:** Lisa Hall 0428 654 004

**STEWARD:** Barb Carr

**Free Entry,**

**Prize money** 1st \$3, 2nd \$2, 3rd \$1

**Entries close:** Friday 3rd October, 2025.

**PLEASE READ STACEY PAVILION GUIDELINES**

## M - 14 YEARS & UNDER

- Class 1242 Three different flowers from the garden
- Class 1243 Flowers in a container
- Class 1244 3 different yellow and/or purple flowers, single or multi blooms
- Class 1245 Three different red and/or pink flowers, single or multiple blooms

- Class 1246 Three different white flowers, single or multiple blooms
- Class 1247 Three different cuts of flowering shrubs
  - **Highest Points Classes 1242-1247 - 14 Yrs & Under - \$10 Mrs BE Eckert Memorial Donated by K & S Eckert**

## M - 11 YEARS & UNDER

- Class 1249 Three different flowers from the garden
- Class 1250 Flowers in a container
- Class 1251 Three different yellow and/or purple flowers, single or multiple blooms
- Class 1252 3 different red and/or pink flowers, single or multi blooms
- Class 1253 Three different white flowers, single or multiple blooms
- Class 1254 Three different cuts of flowering shrubs
  - **Highest Points Classes 1249-1254 - 11 Yrs & Under - \$10 Mrs BE Eckert Memorial Donated by K & S Eckert**

## M - 8 YEARS & UNDER

- Class 1256 Three different flowers from the garden
- Class 1257 Flowers in a container
- Class 1258 3 different yellow and/or purple flowers, single or multiple blooms
- Class 1259 3 different red and/or pink flowers, single or multi blooms
- Class 1260 Three different white flowers, single or multiple blooms
- Class 1261 Three different cuts of flowering shrubs
  - **Highest Points Classes 1256-1261 - 8 Yrs & Under - \$10 Mrs BE Eckert Memorial Donated by K & S Eckert**

# N | HOME BREWING

**CONVENOR:** Ian Jaeschke 0457 985 641

**STEWARD:** Fiona Priest

**Entries close:** Thursday 3rd October 2025.

Entry fee 50 cents per entry

Prize money: First \$10, Second \$5 Third \$2.50

Points: First 5, Second 3, Third 1

## PLEASE READ STACEY PAVILION GUIDELINES

### ADDITIONAL GUIDELINES

- The competition is open to all interested amateur beer makers.
- No commercial entries permitted.
- All entries to be clearly marked with the exhibit number and class - and adhered to bottle. There is no limit to the number of entries per class.
- Entries are to be two (2) bottles. One for judging and one for display.
- Exhibits to be delivered to the Show Office at the show grounds by 4 pm, Thursday before the Show. Brews to be judged on presentation, aroma, clarity of first pour, carbonation, head retention, taste and overall impression.

## N - HOME BREWING

Class 1650	Ale
Class 1651	Lager
Class 1652	Stout
Class 1653	Draught
Class 1654	Boutique Beer, bock, pilsner, English ale, wheat beer etc.
Class 1655	Cider
Class 1656	Miscellaneous, ginger beer, lemonade, liqueur etc

- **Champion Brew - \$50 donated by JK Hagger & Son**
- **Runner-Up Champion Brew - \$25 donated by K & R O'Leary**

## The Hallett Battery Energy Storage System Project

The EnergyAustralia Hallett Team is proud to be a sponsor of the 2025 Jamestown Show.

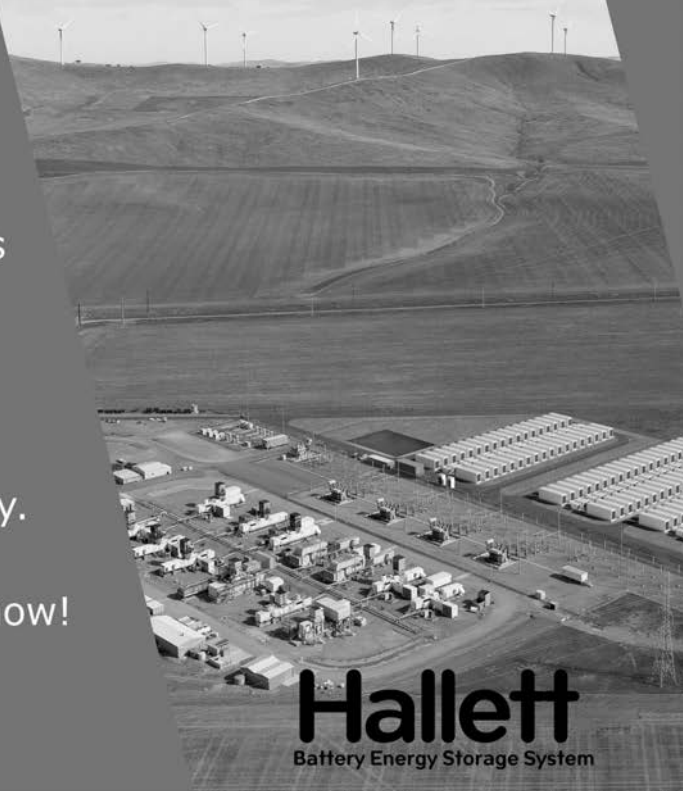
Our team will be available to discuss how the Hallett Battery Energy Storage System together with the existing Hallett Power Station will support South Australia's energy transition and benefit the community.

Visit our booth at the Jamestown Show!

[www.energyaustralia.com.au](http://www.energyaustralia.com.au)



**EnergyAustralia**  
LIGHT THE WAY



**Hallett**  
Battery Energy Storage System



# O | PRESERVES,

## PICKLES, JAMS, GIFT

### BASKETS

**CONVENOR:** Nanette Simpson 0409 697 029

**STEWARD:** Cate Pearce

**Entries close:** Friday 3rd October 2025.

**Entry fee** 50¢ per entry

**Prize money:** First \$3, Second \$2, Third \$1.

**Points:** First 5, Second 3, Third 1

#### PLEASE READ STACEY PAVILION GUIDELINES

#### ADDITIONAL GUIDELINES

- Unless otherwise stated. Jams to be in not less than 500g jars and be sealed with cellophane in preference to screw tops; definitely no wax seals.
- Jars to be CLEARLY LABELLED with description of name or class.
- Jars and lids must be clean.
- Pickles to be in any jar other than preserving jars
- Must be fresh.

Class 1266 Collection of home-made jams.  
3 varieties only, in glass jars

Class 1267 One jar marmalade (grapefruit)

Class 1268 One jar marmalade  
(any other variety)

Class 1269 One jar plum jam

Class 1270 One jar fig jam

Class 1271 One jar strawberry jam

Class 1272 One jar native fruit jam  
e.g Quandong

Class 1273 One jar apricot jam

Class 1274 One jar quince jam or jelly

Class 1275 One jar preserved apricots

Class 1276 One jar preserved peaches

Class 1277 One jar preserved pears

Class 1278 Collection of home-dried fruits.  
3 varieties, 125g each on plate

Class 1279 Collection of home-dried herbs.  
3 varieties only, in screw-top  
jars

Class 1280 One plate of home-dried fruit,  
sun or elect. 200gm

- **Highest points Classes 1266- 1280 - \$20 Rex Hockey Memorial donated by R Hockey**

Class 1281 One jar zucchini pickles

Class 1282 One jar tartare sauce

Class 1283 One bottle mint sauce

Class 1284 One jar pickled onions

Class 1285 One jar of clear mixed pickles

Class 1286 Collection of homemade pickles,  
3 distinct

Class 1287 One jar of mustard pickles

Class 1288 One jar of chutney, any variety

Class 1289 One jar of tomato relish

Class 1290 One bottle of plum sauce

Class 1291 One bottle of tomato sauce

Class 1292 One bottle of tomato sauce  
(Johnno's/Easy to Use Sauce Base)

Class 1293 One bottle tomato sauce using  
Thermo Mix

Class 1294 One small bottle of  
Worcestershire sauce

Class 1295 One jar of lemon cheese

Class 1296 One jar mayonnaise (boiled)

Class 1297 One bottle salad dressing

Class 1298 Bottle of herb vinegar

Class 1299 One Bottle fruit cordial  
(any Flavour)

- **Highest Points Classes 1281-1299 - Sauce / Pickles - \$20 donated by N Simpson**

Class 1300 Gift Basket, for any occasion, to  
include a selection of  
homemade contents

- **Best Gift Basket - \$20 donated by T Young**

MANNANARIE MANOR



Perfect for a Country Getaway!

9 Mannanarie Rd, Jamestown

mannanariemanor@hotmail.com

0438 640 306

# **P | PASTRIES, CAKES**

**CONVENER:** Chris Crawford 0428 866 414

**STEWARDS:** Maureen Growden, Darianne Growden, Sarah Rajkovic, Tilly Clark, Ramsey Taplin

**Entries close :** Friday 3rd October 2025

**Entry fee** 50¢ per entry.

**Prize money:** First \$3, Second \$2, Third \$1.

**Points:** First 5, Second 3, Third 1.

## **PLEASE READ STACEY PAVILION GUIDELINES**

### **ADDITIONAL GUIDELINES**

- Cooking exhibits not collected by 4.30pm on the Monday will be discarded by the society. Cookery items should not be consumed as they are not exhibited in a food safe environment.
- Items may be taken home at the owner's risk
- Cakes must be presented on a firm base, slightly larger than cake, with class ticket firmly attached. **CAKES WILL BE COVERED AFTER JUDGING.**
- All cakes to be home-made; no packet cake mixes allowed, definitely no cake cooler marks, paper or foil must be removed properly from cake.
- Recipes provided in section.

## **P – OPEN CLASSES**

Class 1310 Rich fruit cake - no icing

- **First Prize Class 1310 - Rich Fruit Cake \$ 20 Voucher donated by Healthsave Pharmacy Jamestown**

Class 1311 Genoa cake – no icing

Class 1312 Sultana cake - no icing

Class 1313 Currant cake - no icing

Class 1314 Boiled fruit cake - no cherries or green fruit

Class 1315 Jubilee cake, iced, no nuts or cherries

Class 1316 Nut Loaf - cooked in nut loaf tin

- **Highest points Classes 1310 -1316 - \$10 donated by Murray Pest Control & \$10 voucher donated by Healthsave Pharmacy Jamestown**

Class 1318 Carrot cake - no icing

Class 1319 Banana cake, log, iced top only

Class 1320 Orange cake, square or round, iced top only

Class 1321 Chocolate cake, square or round, iced top only

Class 1322 Coffee cake, cinnamon and sugar top

Class 1323 Apple cake - Recipe provided

### **Apple Cake Recipe:**

190gms (1-1/4 cups) SR Flour, 90gms (3ozs) sugar, 60gms (2oz) butter, 500gms (1lb) well drained stewed apples, 1 egg, small quantity of milk to make a stiff dough.

Rub butter into sifted flour, add sugar, add beaten egg and lastly milk. Roll out to fit approx 20 cm round sandwich tin (mixture top and bottom, apple in centre). Bake 30-40 minutes, ice with lemon flavoured icing.

Class 1324 Potato cake, including sultanas, streusel topping

- **Highest points Classes 1318 - 1324 - \$10 donated by A Messenger & \$10 voucher donated by Healthsave Pharmacy Jamestown**

Class 1326 Gluten free cake, own recipe, un-iced

Class 1327 Cake using four or less ingredients, supply written recipe

Class 1328 Sponge sandwich, jam filled, no icing

Class 1330 Six cream puffs, unfilled, not dusted

Class 1331 Six cream cakes, cooked in paper patties, no jam, not muffin size

Class 1332 Unbaked slices, 3 each of 3 distinct varieties

Class 1333 Chocolate brownie slice, 6 squares

- **Highest points Classes 1326-1333 - \$10 donated by Murray Pest Control \$10 voucher donated by Jamestown Newsagency**

Class 1335 Six shortbread fingers, plain

Class 1336 Six cockles, jam filled, iced with coconut on top.

Class 1337 Six Anzac biscuits

Class 1338 Six savory muffins

Class 1339 Six fruit muffins

- Class 1340 Six scones
- Class 1341 Six melting moments
- Class 1342 Six sausage rolls
- Class 1343 Morning smoko for three  
Shearers displayed in a clear container with lid approx. 30cm x 30cm
- **Highest points Classes 1335-1343 - \$10 donated by M Growden & \$10 voucher donated by Healthsave Pharmacy Jamestown**
- Class 1345 One loaf white bread, using Bread Maker
- Class 1346 One loaf grain and/or seed bread, using Bread Maker
- Class 1347 One loaf white bread, oven baked not using Bread Maker
- Class 1348 One loaf Grain and/or Seed Bread oven baked not using Bread Maker
- Class 1349 One Loaf of Sourdough
- **Highest points Classes 1345-1349 - \$10 donated by V Campbell & \$10 voucher donated by Healthsave Pharmacy Jamestown**
  - **Aggregate points Classes 1310 – 1349 - \$50 donated by Leesong Electrical**

## P - DIABETIC COOKING

Class 1350 Six rock buns, recipe provided

### **Six Rock buns Recipe:**

125gms fat reduced margarine, 250gms SR Flour, 1 heaped tblspn granulated sweetener, 1 cup sultana's and currants, 1 egg beaten, grated rind and juice of 1 lemon, 1 tblspn water approx. If preferred instead of lemon juice, use all water. Rub margarine into flour, add all the other ingredients and mix. Place large teaspoons of mixture on greased oven tray and bake in moderate oven for approx 15 minutes.

Class 1351 Pineapple fruit cake, recipe provided

### **Pineapple Fruit Cake Recipe:**

500gms mixed dried fruit, 1/4 cup orange juice, 125gms butter, 1 tspn mixed spice, 1 cup finely chopped dried apricots, 440gms undrained tin unsweetened crushed pineapple. Boil all the ingredients for 5 minutes, then let cool. Stir in 2 lightly beaten egg whites, 1 tspn carb soda and 2 cups SR Flour. Bake in prepared approx 20 cm square tin for 1 and 1/2 hours.

Class 1352 Sultana loaf, recipe provided

### **Sultana Loaf Recipe:**

1 cup water, 60gms margarine, 240gms SR Flour, 1 egg, 1 cup sultanas, 1 tspn carb soda, 1 tspn mixed spice, 1 tblspn granulated sweetener. Place sultanas, water, sweetener, margarine and carb soda in a saucepan, bring to the boil and simmer for 3 minutes. Allow to cool. Stir in beaten egg, sifted SR Flour and spice, pour into greased loaf tin and bake in moderate oven for approx 35-40 mins.

Class 1353 Six oat and sultana biscuits, recipe provided

### **Six Oat and Sultana Biscuits Recipe:**

1/2 cup margarine, 1 heaped tblspn granulated sweetener, 1 egg, few drops of vanilla essence, 2/3 cup sultanas, 1 cup SR Flour, rolled oats for rolling. Cream margarine, sweetener and vanilla together, add egg, flour and sultanas. Divide into 8 pieces, roll between hands, drop into rolled oats to be coated lightly all over. Place on greased tray and press lightly with fingers to about half height, cook in moderate oven approx 15-20 mins.

- **Highest points Classes 1350-1353 - \$20 donated by S Moss**

## P - SPECIAL BAKING CLASSES

Class 1354 MENS ONLY Chocolate Cake, iced top only, no log or loaf

- **First prize in class 1354 - \$10 donated by M Growden**

Class 1355 MENS ONLY Chocolate Brownie 6 squares

- **First prize in class 1355 - \$10 donated by C Crawford**

Class 1356 Decorated Celebration Cake

- **First Prize in class 1356 - \$10 donated by M Growden**

Class 1357 Decorated Cupcake, muffin size

- **First prize in class 1357 \$10 Voucher donated by Healthsave Pharmacy Jamestown**

# P- JUNIOR COOKING

**CONVENERS:** Raelene Blake 0417 085 628 Natasha Downing 0438 641 099

**Entries close :** Friday 3rd October, 2025.

**Free Entry**

**Prize money** 1st \$3, 2nd \$2, 3rd \$1

**PLEASE READ STACEY PAVILION GUIDELINES**

## ADDITIONAL GUIDELINES

- Cakes must be presented on a firm base with class ticket firmly attached, covered in an oven bag large enough for display.

## P - 15 YEARS & UNDER

- Class 1366 My favourite cake, iced, not judged for decoration
- Class 1367 Four decorated patty cakes, judged for decoration only
- Class 1368 Four decorated gingerbread men
- Class 1369 Four muffins, sweet or savoury
- Class 1370 Four pieces unbaked slice
- Class 1371 Nutritious school lunch in a box
- Class 1372 Pizza
- **Highest points Classes 1366 - 1372 - \$10 donated by K Jaeschke**

## P - 11 YEARS & UNDER

- Class 1373 My favourite cake, iced, not judged for decoration
- Class 1374 Four decorated patty cakes, judged for decoration only
- Class 1375 Four muffins, sweet or savoury
- Class 1376 Four scones
- Class 1377 Nutritious school lunch in a box
- Class 1378 Pizza
- Class 1379 Four decorated gingerbread men
- **Highest points Classes 1373 - 1379 - \$10 Mrs BE Eckert Memorial donated by C McAlister**

## P - 8 YEARS & UNDER

- Class 1380 Four decorated patty cakes, judged for decoration only

- Class 1381 Four chocolate crackles
- Class 1382 Four muffins, sweet or savoury
- Class 1383 Four scones
- Class 1384 Nutritious school lunch in a box
- Class 1385 Pizza
- **Highest points Classes 1380 - 1385 8 Yrs & Under - \$10 donated by V Campbell**

## P - 5 YEARS & UNDER

- Class 1386 Four decorated patty cakes, judged for decoration only
- Class 1387 Four chocolate crackles
- Class 1388 Four scones
- Class 1389 Nutritious school lunch in a box
- Class 1390 Four decorated milk arrowroot biscuits
- **Highest points Classes 1386 - 1389 5 Yrs & Under - \$10 - Mrs BE Eckert Memorial donated by C McAlister**

# P - S.A. COUNTRY SHOW COMPETITIONS

Class 9000 LAUCKE / S.A. COUNTRY WOMEN'S ASSOCIATION SCONE COMPETITION 2025  
**SAVOURY SCONE**

**USING THE LAUCKE / CWA SCONE MIX**

Available from your local CWA Branch or local supermarkets

**One entry per person.**

**PRIZES** First: Laucke Goods Hamper Second & Third: Laucke Country Women's Scone Mix

## JUDGING GUIDELINES

- 5 scones presented for judging.
- The scones should be approximately 5 cm in diameter.
- Well risen, straight sides, thin golden crisp top and bottom, no flour on base.
- Fine, moist texture, good crumb, good flavour, and according to type.
- Entries must be from an individual and must include the entrants, name and full contact details

Winners from each local show are eligible to enter and will be judged at the NASA Presentation Dinner

on the 28th of March 2026 in Crystal Brook where two winners are chosen to represent NASA at the Royal Adelaide Show in September 2026  
The best variation of savoury scones using the Laucke Country Women's Scone Mix 5 scones are to be presented.

**Where prize money will be**

**First \$200, Second \$75, Third \$4**

#### **Class 9001 GENOA CAKE COMPETITION**

Sponsored by the Agricultural Societies of SA  
Sunbeam Foods and Angove's 2025  
Semi-Final | Wilmington/Balaklava

**No entry fee**

**Prizes: First \$50, Second \$20, Third \$10**

Entries to be forwarded to Secretaries of the above Societies. This competition will be for a Genoa Cake made to exhibitor's own recipe. The finalists from each Show will be eligible to enter a Genoa Cake at the State Final to be held in conjunction with the Royal Adelaide Show 2026, where the prize money will be: First \$300, Second \$75, Third \$40.

This Genoa Cake Competition will be conducted under the same lines as the Fruit Cake Competition. Only one cake allowed per exhibitor at each Show.

\*Further particulars from the Secretaries of the above Societies or the Association Secretary.

#### **Class 9002 RICH FRUIT CAKE CHAMPIONSHIP AGRICULTURAL SOCIETIES COUNCIL OF S.A.**

**Sponsored by the Agricultural Societies Council of  
SA, Sunbeam Foods and Angove's  
2025 Semi-Finals | Quorn/Eudunda**

**No entry fee**

**Prizes: First \$60, Second \$25, Third \$10**

Winner eligible to compete in State Final at the Royal Adelaide Show in 2025 where prize money will be:

First \$300, Second \$150, Third \$50

- Set recipe to be used
- Cake to remain uniced
- Cake to remain undecorated (i.e. no almonds as decorations)
- Competitors must ensure that their entries are delivered to the Show hosting the semi-final for the relevant Association either in person or by a representative at the time and place as specified by the hosting Show. No postal entries to be accepted at semi-final or state final level.
- Entries to be forwarded to Secretaries of the above Societies.

#### **RECIPE:**

**INGREDIENTS:** 250g butter, 250g dark brown sugar, 6 eggs, 250g sultanas, 250g raisins, 250g currants, 100g dates, 60g chopped red glace cherries, 60g mixed peel, 60g chopped almonds, 375g plain flour, 1 teaspoon baking powder, 1 teaspoon mixed spice, 200ml sherry or brandy.

**METHOD:** Chop fruits (size of currants), mix together and soak in the sherry or brandy overnight. Sift together flour, baking powder and spice. Cream together butter and sugar. Add the eggs one at a time, beating well after each addition, then alternately add the fruit and flour and lastly the chopped nuts. Mix thoroughly. Place mixture into a prepared square tin (19-22 cm approx.) in size. Bake in a slow oven for approx. 3 to 3½ hours.

#### **Class 9003 Native Food Competition**

- **BEST USE OF NATIVE FOOD | \$30 VOUCHER**  
**Voucher donated by Creative Native**

Best baked item featuring a Native Food item, can be either sweet or savoury - e.g, lemon myrtle, wattle seed etc

- **Free entry, only one entry per person**
- 5 small, identical items such as biscuits, quiche
- Native Food item labelled on the entry
- Entrants are only eligible to win one local final
- Winners from each local show to be eligible to enter and to be judged at the NASA finals 28th March 2026 at Crystal Brook.
- The 10 Association winners will then compete in a State Final Bake Off as a part of the 2026 Royal Adelaide Show





*For all your  
sawmilling  
needs!*

**morgan sawmill**

PALLETS | BINS | POSTS | WOODCHIPS

**Phone: 08 8664 0392**

*Website: [www.morgansawmill.com.au](http://www.morgansawmill.com.au)*

*Email: [sales@morgansawmill.com.au](mailto:sales@morgansawmill.com.au)*



PTY LTD • BLD 273204

- ✓ On and Off Grid Solar System Design & Installation
- ✓ Appliance Repairs
- ✓ Split System Airconditioners
- ✓ Solar Bore Pumps
- ✓ Emergency & Breakdown Service
- ✓ Professional Reliable Service
- ✓ Mobile Signal Boosters
- ✓ Test & Tag
- ✓ Solar Batteries

SERVICING JAMESTOWN & SURROUNDING AREAS **0400 919 176**



MID NORTH EQUIPMENT  
AND SAFETY



**0487 197 380**

**1-9 Ayr Street  
Jamestown SA**

- Servicing & Repairs
- Spare parts
- Donaldson Filters
- Hard Yakka/King Gee
- Briggs and Stratton
- Belts/Shell Oils and Fuels
- Bearings/Seals
- Pulleys
- Sprockets
- Safety equipment



[www.midnorthequipmentandsafety.com.au](http://www.midnorthequipmentandsafety.com.au)

# Q | HANDICRAFT

**CONVENOR:** Heidi Hankins 0497 655 792

**Entries close** Friday 3rd October 2025.

**Entry Fee** 50c per entry.

**Prize money:** First \$3 Second \$2 Third \$1.

**Points:** First 5 points, Second 3 points, Third 1 point

- All entries must be handmade and work of the exhibitor.
- Class tickets must be attached securely to all exhibits.
- All work must be clean and finished neatly. Quality will be the first consideration in judging.
- Exhibits must not have been shown at any previous Jamestown Show in the past.

## Q - CRAFT - SENIOR

**Class 1395** Article of leather work  
e.g. wallet, jewellery, belt, bag, satchel, dog collar, knife sheath, footwear etc

**Class 1396** Handcrafted Teddy bear or stuffed animal

- fur or fabric, minimum height 20cm (head to toe)
- must be articulated

**Class 1397** Plaque or wall hanging

- any medium, other than fabric
- minimum size 20cmx20cm, maximum size A3/A2

**Class 1398** A piece of handmade jewellery

- any style or medium, not restricted to just beaded items
- suitably mounted or presented in a way which can be easily displayed
- e.g. earrings, brooch, necklace, bracelet, ring etc

**Class 1399** Article decorated/made with natural resources

- e.g. shells, gumnuts, reeds, grasses, leaves, sand, pebbles, flowers, twigs etc

**Class 1400** Christmas decoration

- Any medium, no larger than a shoebox e.g. tree decoration, table decoration etc

**Class 1401** Article featuring resin/resin pour

- e.g. cutting board, key chain, drink coaster, photo frame, jewellery etc

**Class 1402** Article featuring decoupage

- flat (2D) or multi-faced (3D)

**Class 1403** Article featuring mosaic

- no bigger than 30x30x30cm
- e.g. drink coaster, tile, vase, photo frame, garden decoration, wall plaque, 3D sculpture, etc

**Class 1404** Article featuring punch needle embroidery

- no bigger than 30cm x 30cm
- e/g/ wall decoration/hanging, cushion, pillow cover, small item of clothing, handbag etc

**Class 1405** Article of leadlight

- e.g. window pane, suncatcher, lamp shade, jewellery box, garden decoration etc.

**Class 1406** Diamond bead painting

- framed or unframed
- no larger than A2, including frame (420x594cm)

**Class 1407** Article featuring paper tole

- framed or unframed, no larger than A3

**Class 1408** Craft article not mentioned above

If you have a handmade craft article which does not quite fit in any of the above categories you can enter it here.

- **Highest points Classes 1395-1408 - \$30 \$10 donated by Tash Downing \$20 donated by Moellner Family**

## Q - SCRAPBOOKING - SENIOR

**Class 1415** Family/friends/people/ children theme- single page

**Class 1416** Heritage theme- single page

**Class 1417** Wedding/birthday/special occasion themed- single page

**Class 1418** Botanical theme - single page

**Class 1419** Open subject- single page  
**CARDS – SENIOR** (all cards must be handmade)

**Class 1424** Card- featuring cross stitch or any other embroidery technique

**Class 1425** Card- Christmas theme

**Class 1426** Card- Wedding theme

**Class 1427** Card - Botanical theme

**Class 1428** Card- Open subject

- **Highest points Classes 1415-1428 - \$20 donated by Anna & Matt Blieschke**

# **Q | JUNIOR ART & CRAFT**

**CONVENOR:** Kerrie Robinson 0438 640 218

**Stewards:** Nicole Downing | Andrea Voumard

**Free Entry.**

**Prize money** First \$3, Second \$2, Third \$1.

**PLEASE READ STACEY PAVILION GUIDELINES  
ADDITIONAL GUIDELINES**

There are two parts for entering these sections.

**Closing date Friday 3rd October 2025 3:30pm**

**Online Entries/Membership via**

<https://showday.online/show/jamestown>,

closing date Friday 3rd October 2025 3:30pm

**Manual Entry** either in Show Book, online

at <https://jamestownshow.com.au> or

email [entries@jamestownshow.com.au](mailto:entries@jamestownshow.com.au)

- Complete an entry either online or a manual entry form, if you have any issues please contact Entries Coordinator at [entries@jamestownshow.com.au](mailto:entries@jamestownshow.com.au) or ring 0429641027
- Entry tickets and a summary of what is entered will be supplied
- Entry tickets need to be attached securely to each exhibit prior to placing in pavilion and summary retained for collection after show.
- Exhibits need to be delivered to Stacey Pavilion and only to the Secretary's office when the Stacey Pavilion is not open.
- Entries close : Friday 3rd October 2025.
- All exhibits in this section can be delivered to the Stacey Pavilion between **10am to 3pm Saturday 4th October or the week prior to the show when office attended**
- Collection of exhibits at the end of the show from 3:00pm-4:00pm Monday 6th October.
- Entries of Lego to be no larger than 30cm x 30cm
- Paintings
- Collage and drawings can be up to A3 in size Collage definition: the technique where pieces of paper, photographs, fabric and other bits are stuck onto paper to make a picture or pattern.

**All exhibits in this section can be delivered to Stacey Pavillion 10am to 3pm Saturday 4th October or week prior to the show**

## **Q - SCRAPBOOKING 14 YRS & UNDER**

Class 1430	Family - one page only
Class 1431	Holidays - one page only
Class 1432	Pets - one page only

## **Q - ART & CRAFT 12 - 14 YEARS**

Class 1435	Painting, any medium
Class 1436	Drawing, any medium
Class 1437	Collage
Class 1438	Any article containing wool
Class 1439	3D article – using natural resources and/or recycled materials

Class 1441	Computer printout of art or design image
Class 1442	Lego article exhibitor's original design – no kits, size under 30cm x 30cm
<ul style="list-style-type: none"><li>• <b>Highest points Classes 1430 - 1442 - \$10 Olive Wilkins Memorial donated by Jenny Hall</b></li><li>• <b>Highest points Classes 1435-1442 - 12-14 Yrs - \$10 donated by Jamestown Probus</b></li></ul>	

## **Q - ART & CRAFT 9 - 11 YEARS**

Class 1445	Painting
Class 1446	Drawing
Class 1447	Collage
Class 1448	3D object – using natural res and/or recycled materials
Class 1449	Any article containing wool
Class 1451	Computer printout of art or design image
Class 1453	Lego article exhibitor's original design – no kits, size under 30cm x 30cm
Class 1454	Greeting card
<ul style="list-style-type: none"><li>• <b>Highest points Classes 1445 - 1454 - 9-11 YEARS - \$10 donated by R &amp; E Keatley</b></li></ul>	

## **Q - ART & CRAFT 6 - 8 YEARS**

Class 1455	Painting
Class 1456	Drawing
Class 1457	Collage
Class 1458	Greeting card
Class 1459	3D article - using natural resources and/or recycled materials
Class 1460	Computer printout of art or design
Class 1461	Any article containing wool
Class 1462	Lego article exhibitor's original design – no kits, size under 30cm x 30cm
<ul style="list-style-type: none"><li>• <b>Highest points Classes 1455-1462 - 6-8 Years - \$10 donated by Anna &amp; Matt Blieschke</b></li></ul>	

## **Q - ART & CRAFT 5 YEARS & UNDER**

Class 1463	Drawing
Class 1464	Collage
Class 1465	Greeting card
Class 1466	3D article – using natural resources and/or recycled materials
Class 1467	Computer printout of art or design
Class 1468	Lego article exhibitor's original design – no kits size under 30cm x 30cm
Class 1469 A	ny article containing wool
Class 1470	Painting
<ul style="list-style-type: none"><li>• <b>Highest points Classes 1463-1470 - 5 Yrs &amp; Under - \$10 donated by K Jaeschke</b></li></ul>	

# **R | ART, METAL ART & WOODWORK**

**CONVENOR:** Karen Heness

**STEWARD:** Anna Blieschke

**Entries close** Friday 3rd October 2025.

**Entry fee** 50¢ per entry

**Prize money:** First \$3, Second \$2, Third \$1.

**Points:** First 5, Second 3, Third 1.

## **PLEASE READ STACEY PAVILION GUIDELINES**

### **ADDITIONAL GUIDELINES**

- Pictures and hanging articles must have some means suitable for hanging.
- Any media or mixed media may be used for classes 1475-1482.
- Classes 1485 - 1488 to be made from old corrugated iron and/or recycled metal, e.g. from the scrap heap, old machinery parts, droppers, wire netting, etc.
- 18 years & under- entries to be no larger than 45 cm x 45 cm.
- Entries must NOT have been previously exhibited in the Jamestown Show.

### **R - ART**

- |            |  |
|------------|--|
| Class 1475 | Oil or Acrylic - any subject             |
| Class 1476 | Watercolour - any subject                |
| Class 1477 | Pencil or Charcoal Drawing - any subject |
| Class 1478 | Pen and Wash - any subject               |
| Class 1479 | Pastel Drawing - any subject             |
| Class 1480 | Abstract Drawing - any subject           |
| Class 1481 | Mixed Media - any subject                |
| Class 1482 | Acrylic Pouring/Fluid Art                |

- **Highest points Classes 1475-1482 - Art - \$10 donated by K Bottrall**

### **R - METAL ART**

- |            |  |
|------------|--|
| Class 1485 | Metal sculpture 3 D                          |
| Class 1486 | Freestanding sculpture                       |
| Class 1487 | Functional article                           |
| Class 1488 | Decorated gate not to exceed 1000mm in width |

- **Highest points Classes 1485-1488 - Metal Art - \$20 CC Cooper Memorial donated by LT Cooper**

### **R - WOODWORK**

- |            |   |
|------------|---|
| Class 1489 | Wooden Sculpture 3D                       |
| Class 1490 | Wood turned article                       |
| Class 1491 | Functional item of furniture for the home |
| Class 1492 | Child's wooden toy. No ride on toys       |

- **Highest points Classes 1489-1492 - Woodwork - \$20 donated by PA & AL Hagger**

### **R - ART & METAL ART - 18 YEARS & UNDER**

- |            |                                  |
|------------|----------------------------------|
| Class 1495 | 3D object any medium             |
| Class 1496 | Painting                         |
| Class 1497 | Computer generated image/printed |

- **Highest points Classes 1495-1497 Art & Metal 18 Yrs & Under - \$10 donated by Jamestown Probus**



[www.jamestowndental.com.au](http://www.jamestowndental.com.au)

**P: 8664 1204**

**Kelly Toyota**

2 Boundary Rd, Jamestown SA 5491  
Ph: 08 8664 1253



**Visit our display at the show!**

Toyota New & Used Vehicles • Victa Lawn Mowers • Spare Parts & Accessories  
Fully Equipped Workshop Including Heavy Vehicle Maintenance  
Automatic & Self-Serve Carwash • Hydraulic Hoses & Fittings

**Sales:** Paul Kelly – 0455 252 953 • Kym Grover – 0417 805 753

**Service:** Rick Kelly – 0437 641 255 • **Parts:** Chris Kelly – 0447 641 115

**[kellytoyota.com.au](http://kellytoyota.com.au)**

# **S | KNITTING & CROCHETING**

**CONVENOR:** Alison Dunling 0437 540 047

**STEWARD:** Rebecca Dunling

**Entries close** Friday 3rd October 2025.

**Entry fee** 50¢ per entry

**Prize money:** First \$3, Second \$2, Third \$1.

**Points:** First 5, Second 3, Third 1.

**PLEASE READ STACEY PAVILION GUIDELINES**

## **ADDITIONAL GUIDELINES**

- No entry to have been worn, washed or dry-cleaned.
- Hand knit or crochet using wool, synthetic or cotton yarn.
- All categories are knit or crochet unless specified.

Class 1500	Scarf
Class 1501	Beanie or hat
Class 1504	Rug 100cm x 100cm or larger
Class 1505	Child over 2 years article of clothing
Class 1506	Child under 2 years article of clothing
Class 1507	Over 70 years old article
Class 1509	Un-enumerated article of Knitting
Class 1510	Un-enumerated article of crochet

Class 1511	Tea cosy
Class 1512	Soft toy, suitable for baby
Class 1513	Toy, suitable for child 2 years and over
Class 1514	Knee rug, 60 x 60cm or larger
Class 1515	Dressed doll
Class 1516	2 coat hangers
Class 1517	Placemat or Doiley
Class 1518	Cushion
Class 1519	Door stopper or draft stopper
Class 1520	Over 10 ply article

- **Highest points Classes 1500-1520 Knitting & Crocheting - \$20 donated by Jamestown CWA**



## **Insurance Solutions**

B M Insurance Solutions Pty Ltd  
ACN 630 679 999

Authorised Representative of Resilium Insurance Broking Pty Ltd

**Call & speak to us about all your General insurance needs for:**

- Farm
- Business
- Home & Contents
- Landlords
- Motor Vehicles

**a:** 14 Ayr Street, Jamestown SA 5491

**Call Ben Moss**

**t:** 08 8664 0123 | **m:** 0488 070 984

**e:** [ben@bminsurancesolutions.com.au](mailto:ben@bminsurancesolutions.com.au)



# **T | SEWING & NEEDLEWORK**

**CONVENOR:** Jane Redden 0409 641 639

**STEWARD:** Anne-Marie Simpson, Speed Catford

**Entries close** Friday 3rd October 2025.

**Entry fee** 50¢ per entry

**Prize money:** First \$3, Second \$2, Third \$1.

**Points:** First 5, Second 3, Third 1.

## **PLEASE READ STACEY PAVILION GUIDELINES**

### **ADDITIONAL GUIDELINES**

- Except for the Quilting in Class 537 & 540, entries in all other classes must be the exhibitor's own work.
- No entry to have been worn, washed or dry-cleaned.
- Entries can be appliqué, hand or machine pieced, hand or machine quilted unless otherwise stated.
- Depending on entry numbers quilts entered may not be fully displayed.

### **T - SEWING & NEEDLEWORK**

Class 1525 Framed picture using any type of embroidery or tapestry

Class 1526 Cushion

Class 1527 Fabric toy or rag doll

Class 1528 Fabric bag any style

Class 1529 Pin cushion

Class 1530 Hand embroidered article

Class 1531 Machine sewn article

- **Highest points Classes 1525–1531 Sewing & Needlework - \$10 JA Humphris Memorial donated by C Humphris & \$10 Voucher donated by Healthsave Pharmacy Jamestown**

### **T - PATCHWORK & QUILTING**

Class 1535 Cot or lap sized quilt, hand quilted

Class 1536 Cot or lap sized quilt, machine quilted

Class 1537 Cot or lap sized quilt commercially quilted

Class 1538 Single, double or queen size quilt hand quilted

Class 1539 Single, double or queen size quilt machine quilted

Class 1540 Single, double or queen size quilt commercially quilted

Class 1541 Wall hanging no larger than 100cm x 100cm

Class 1542 Bag any style

Class 1543 Cushion

Class 1544 Un-enumerated article

- **Highest points Classes 1535-1544 Patchwork & Quilting - \$50 donated by Jamestown Quilters**

## **T - JUNIOR SEWING, NEEDLEWORK & KNITTING**

**Free Entry,**

**Prizes** First \$3, Second \$2, Third \$1

**Entries close** Friday 3rd October 2025

## **PLEASE READ STACEY PAVILION GUIDELINES**

### **12-16 YEARS**

Class 1545 Yarn article, woven, knitted or crochet (eg scarf)

Class 1546 Machine sewn article (eg potholder)

Class 1547 Patchwork article

Class 1548 Embroidered /hand sewn article

Class 1549 Unenumerated article

- **Highest points Classes 1545–1549 - 12-16 Yrs - \$10 donated by R & E Keatley**

### **11 YEARS & UNDER**

Class 1555 Yarn article, woven, knitted or crochet (eg scarf)

Class 1556 Machine sewn article (eg potholder)

Class 1557 Patchwork article

Class 1558 Embroidered /hand sewn article

Class 1559 Unenumerated article

- **Highest points Classes 1555-1559 - 11 Yrs & Under - \$10 donated by R & E Keatley**

# **U | MUD PIES**

**CONVENOR:** Carmel Mathews 0424 083 913

**STEWARD:** Maddi Mathews

**Entries close** Friday 3rd October, 2025.

**Entry fee is FREE**

**Prize money:** First \$3, Second \$2, Third \$1

## **PLEASE READ STACEY PAVILION GUIDELINES**

### **ADDITIONAL GUIDELINES**

- All pies must be made from 100% mud. All pies must be baked in the sun and well "cooked"

## **U - 9 – 13 YEARS**

Class 2001 Smallest Pie

Class 2002 Dream Cake

Class 2003 Fairy Cake

Class 2004 Time for sport

Class 2005 On the Farm

Class 2006 The Outback

- **Highest points Classes 2001–2006 - 9-13 Yrs - \$10 donated by NicFit**

## **U - 5- 8 YEARS**

Class 2007 Smallest Pie

Class 2008 Sparkles and Sprinkles

Class 2009 Fairy Cake

Class 2010 Under the Sea

Class 2011 On the Farm

Class 2012 On The Track

- **Highest points Classes 2007-2012 - 5-8 Yrs - \$10 donated by NicFit**

## **U - 4 YEARS & UNDER**

Class 2013 Smallest Pie

Class 2014 Sparkles and Sprinkles

Class 2015 Fairy Cake

Class 2016 Under the Sea

Class 2017 On the Farm

Class 2018 On the Track

- **Highest points Classes 2013-2018 - 4 Yrs & Under - \$10 donated by NicFit**



*Contact: CHRIS or DONNA*

**FOR ALL YOUR GENERAL  
INSURANCE REQUIREMENTS**

Walkington's Insurance Agencies is an Authorised Representative  
000263138 of Community Broker Network Pty Ltd  
ABN 60 096 916 184 | AFSL 233750

**JAMESTOWN OFFICE:**  
**76 Ayr Street, Jamestown SA 5491**  
**p: (08) 8664 1298**  
**e: wia@wia.net.au**



### **GENERAL FREIGHT CARRIERS - ADELAIDE DAILY**

JAMESTOWN | BURRA | CLARE | ORROROO  
PETERBOROUGH | BOOLEROO CENTRE | LAURA  
CRYSTAL BROOK | PORT PIRIE

**PHONE : 08 8664 1475**

admin@jeffrowetransport.com.au  
1 WENHAMS ROAD, JAMESTOWN SA 5491

# V | PHOTOGRAPHY

**CONVENOR:** Nanette Simpson 0409 697 029

**STEWARDS:** Sue Denton

Entries close Mon 29th September 2025.

Entry fee 50¢

Prize money: First \$3, Second \$2, Third \$1.

Points: First 5, Second 3, Third 1.

**Sponsored by:** Clive Palmer

## PLEASE READ STACEY PAVILION GUIDELINES

### ADDITIONAL GUIDELINES

- Exhibitors: Please note Judging of Photography will be prior to the Show for ALL classes
- All entries must be at Show Office by Monday September 29th, between 10am – 2pm
- Limit of three entries in each class by any one exhibitor
- Prints to be mounted on lightweight card with 12 mm border, classes 565 - 575 and 580 - 586
- Entry tickets must be attached to the bottom edge of card. This is the responsibility of the exhibitor, NOT the Secretary or Convener
- Minimum size of prints 15 cm x 10 cm. Maximum 20 cm x 15 cm
- Name of exhibitor and class number to be written on back of prints
- Prints not to be framed, excluding class 576
- All prints to have been taken by the Author named on the prints
- Entries will only be returned by mail if accompanied by appropriate postage

## P - OPEN

- |            |  |
|------------|--|
| Class 1565 | Animal, bird or reptile study  |
| Class 1566 | Flower study   |
| Class 1567 | Rural scene  |
| Class 1568 | Night Picture or Lightning   |
| Class 1569 | Black & white – Historic old ruins, relics etc from the past           |
| Class 1570 | Sunrise/sunset   |
| Class 1571 | Portrait   |
| Class 1572 | People   |
| Class 1573 | Community Moment   |
| Class 1574 | Open coloured prints   |
| Class 1575 | Photo taken at last year's Show 2024                                   |
| Class 1576 | Enlarged prints any subject, colour, black & white. Min size 20cm x 20 |
- **Highest points Classes 1565-1576 - Open Photography - \$15 Mrs. I C Blake Memorial donated by W G Blake**

- **Champion Print Open Photography - \$20 donated by Clive Palmer**

## P - JUNIOR PHOTOGRAPHY 5 -15 YEARS

- |            |                                      |
|------------|--------------------------------------|
| Class 1580 | Animal, birds or insects             |
| Class 1581 | Selfies                              |
| Class 1582 | Open - any subject                   |
| Class 1583 | Night Scene                          |
| Class 1584 | Flower study                         |
| Class 1585 | Most Colourful                       |
| Class 1586 | Photo taken at last year's Show 2024 |

- **Highest points Classes 1580-1586 Junior Photography - \$10 donated by Clive Palmer**
- **Champion Junior Print - \$10 donated by Clive Palmer**



# W | POULTRY

**CONVENOR:** Stuart Dale 0499 442 877,  
scroggin.dale@gmail.com

**STEWARD:** P Hunter, D Cooper, J Werhmann, C Jones,  
CJ Cooper, T Cooper

**Entries close** Friday 3rd October 2025.

**Entry fee** is 50c per entry

**Prize money:** First \$3, Second \$2, Third \$1

**Points allotted:** First 5, Second 3, Third 1.

**Reserved parking for poultry and pigeon exhibitors  
on Kilmarnock Tce next to new poultry pavilion.  
Vehicles do not need to enter the showgrounds to  
access pavilion.**

## Online Entries/Membership via

<https://showday.online/show/jamestown>,  
closing Date Friday October 3rd 2025.

**Manual Entry** either in Show Book, online at  
<https://jamestownshow.com.au> or email  
entries@jamestownshow.com.au

## CONDITIONS

- All exhibits to be penned by 10 am on Sunday 5th October and to remain until 4:00 pm Monday 6th, Birds coming from more than 100 kms away may be removed 4:30pm Sunday 5th October by arrangement with convenor
- Exhibits encouraged to be penned Sunday by arrangement with the convenor.
- Affiliated with the SA Poultry Association. One entry per line on form.
- The Society and Convenor have the right (but not obligation) to cancel the Poultry Section if the forecast temperature for Jamestown is over 33c for Show Day. This will be taken from the Bureau of Meteorology forecast (online) on the Saturday prior to the show.
- Entry forms will be returned to exhibitors on show morning.
- NASA Aggregate Trophy eligibility in front of book.
- Rings without personal identification will be allowed. Any bird infested with stickfast flea or lice or obviously ill will be prohibited from competing and will be removed from the pavilion. Birds will be judged by the Australian Poultry Standards 2nd edition. Prize money and trophies will be distributed by the Convenor at 4pm.

## W - SOFT FEATHERED BANTAM

Class 10601	Langshan ARC Cock
Class 10602	Langshan ARC Hen
Class 10603	Langshan ARC Cockeral

Class 10605	Pekin White Cock
Class 10606	Pekin White Hen
Class 10607	Pekin White Cockeral
Class 10608	Pekin White Pullet
Class 10609	Pekin Black Cock
Class 10610	Pekin Black Hen
Class 10611	Pekin Black Cockeral
Class 10612	Pekin Black Pullet
Class 10613	Pekin Buff Cock
Class 10614	Pekin Buff Hen
Class 10615	Pekin Buff Cockeral
Class 10616	Pekin Buff Pullet
Class 10617	Pekin Cuckoo Cock
Class 10618	Pekin Cuckoo Hen
Class 10619	Pekin Cuckoo Cockeral
Class 10620	Pekin Cuckoo Pullet
Class 10621	Pekin Blue Cock
Class 10622	Pekin Blue Hen
Class 10623	Pekin Blue Cockeral
Class 10624	Pekin Blue Pullet
Class 10625	Pekin AORC Cock
Class 10626	Pekin AORC Hen
Class 10627	Pekin AORC Cockeral
Class 10628	Pekin AORC Pullet
Class 10629	Rhode Is Red Cock
Class 10630	Rhode Is Red Hen
Class 10631	Rhode Is Red Cockeral
Class 10632	Rhode Is Red Pullet
Class 10633	Sebright Gold Cock
Class 10634	Sebright Gold Hen
Class 10635	Sebright Gold Cockeral
Class 10636	Sebright Gold Pullet
Class 10637	Sebright Silver Cock
Class 10638	Sebright Silver Hen
Class 10639	Sebright Silver Cockeral
Class 10640	Sebright Silver Pullet
Class 10641	Rosecomb Black Cock
Class 10642	Rosecomb Black Hen
Class 10643	Rosecomb Black Cockeral
Class 10644	Rosecomb Black Pullet
Class 10645	Rosecomb AORC Cock
Class 10646	Rosecomb AORC Hen
Class 10647	Rosecomb AORC Cockeral
Class 10648	Rosecomb AORC Pullet
Class 10649	Wyandotte Black Cock
Class 10650	Wyandotte Black Hen
Class 10651	Wyandotte Black Cockeral
Class 10652	Wyandotte Black Pullet
Class 10653	Wyandotte Silver Pencil Cock
Class 10654	Wyandotte Silver Pencil Hen
Class 10655	Wyandotte Silver Pencil Cockera
Class 10656	Wyandotte Silver Pencil Pullet

Class 10659 Wyandotte Partridge Cockerel  
 Class 10660 Wyandotte Partridge Pullet  
 Class 10661 Wyandotte White Cock  
 Class 10662 Wyandotte White Hen  
 Class 10663 Wyandotte White Cockerel  
 Class 10664 Wyandotte White Pullet  
 Class 10665 Wyandotte AORC Cock  
 Class 10666 Wyandotte AORC Hen  
 Class 10667 Wyandotte AORC Cockerel  
 Class 10668 Wyandotte AORC Pullet  
 Class 10669 Ancona Cock  
 Class 10670 Ancona Hen  
 Class 10671 Ancona Cockerel  
 Class 10672 Ancona Pullet  
 Class 10673 Japanese ARC Cock  
 Class 10674 Japanese ARC Hen  
 Class 10675 Japanese ARC Cockerel  
 Class 10676 Japanese ARC Pullet  
 Class 10677 Australorp Cock  
 Class 10678 Australorp Hen  
 Class 10679 Australorp Cockerel  
 Class 10680 Australorp Pullet  
 Class 10681 Leghorn White Cock  
 Class 10682 Leghorn White Hen  
 Class 10683 Leghorn White Cockerel  
 Class 10684 Leghorn White Pullet  
 Class 10685 Leghorn Brown Cock  
 Class 10686 Leghorn Brown Hen  
 Class 10687 Leghorn Brown Cockerel  
 Class 10688 Leghorn Brown Pullet  
 Class 10689 Leghorn Black Cock  
 Class 10690 Leghorn Black Hen  
 Class 10691 Leghorn Black Cockerel  
 Class 10692 Leghorn Black Pullet  
 Class 10693 Leghorn AORC Cock  
 Class 10694 Leghorn AORC Hen  
 Class 10695 Leghorn AORC Cockerel  
 Class 10696 Leghorn AORC Pullet  
 Class 10697 Sussex ARC Cock  
 Class 10698 Sussex ARC Hen  
 Class 10699 Sussex ARC Cockerel  
 Class 10700 Sussex ARC Pullet  
 Class 10701 Araucana ARC Cock  
 Class 10702 Araucana ARC Hen  
 Class 10703 Araucana ARC Cockerel  
 Class 10704 Araucana ARC Pullet  
 Class 10705 Frizzle AC Cock  
 Class 10706 Frizzle AC Hen  
 Class 10707 Frizzle AC Cockerel  
 Class 10708 Frizzle AC Pullet  
 Class 10709 Plymouth Rock ARC Cock  
 Class 10710 Plymouth Rock ARC Hen  
 Class 10711 Plymouth Rock ARC Cockerel  
 Class 10712 Plymouth Rock ARC Pullet

Class 10713 Belgian ARC Cock  
 Class 10714 Belgian ARC Hen  
 Class 10715 Belgian ARC Cockerel  
 Class 10716 Belgian ARC Pullet  
 Class 10717 Soft Feathered Bantam AOV Cock  
 Class 10718 Soft Feathered Bantam AOV Hen  
 Class 10719 Soft Feathered Bantam AOV Cockerel  
 Class 10720 Soft Feathered Bantam AOV Pullet  
 Class 10721 Heavy Breed Soft Feather Bantam Trio  
 Class 10722 Light Breed Soft Feather Bantam Trio

- **Aggregate Points- Poultry - Feed donated by Laucke Mills**

## W - STANDARD LIGHT BREEDS

Class 10090 Campine AC Cock  
 Class 10091 Campine AC Hen  
 Class 10092 Minorca Cock  
 Class 10093 Minorca Hen  
 Class 10094 Spanish Cock  
 Class 10095 Spanish Hen  
 Class 10096 Leghorn White Cock  
 Class 10097 Leghorn White Hen  
 Class 10100 Leghorn Brown Cock  
 Class 10101 Leghorn Brown Hen  
 Class 10102 Leghorn AOC Cock  
 Class 10103 Leghorn AOC Hen  
 Class 10106 Andalusian Cock  
 Class 10107 Andalusian Hen  
 Class 10108 Hamburg Black Cock  
 Class 10109 Hamburg Black Hen  
 Class 10110 Hamburg Silver Spangled Cock  
 Class 10111 Hamburg Silver Spangled Hen  
 Class 10112 Hamburg Gold Pencilled Cock  
 Class 10113 Hamburg Gold Pencilled Hen  
 Class 10118 Ancona Cock  
 Class 10119 Ancona Hen  
 Class 10120 Silkie AC Cock  
 Class 10121 Silkie AC Hen  
 Class 10122 Standard Light Breed AOV Cock  
 Class 10123 Standard Light Breed AOV Hen  
 Class 10124 Standard Light Breed Breeding Trio

- **CHAMPION LIGHT BREED - Sash & Feed donated by NR Ag**
- **Champion Light Breed Male- Sash**
- **Champion Light Breed Female – Sash**

## W - STANDARD HARD FEATHERED

Class 10001 Modern Game, Black Red Cock  
 Class 10002 Modern Game, Black Red Hen  
 Class 10003 Modern Game, Duckwing, AC Cock



Class 10004	Modern Game, Duckwing, AC Hen
Class 10005	Modern Game, AOC Cock
Class 10006	Modern Game, AOC Hen
Class 10007	Indian Game, AC Cock
Class 10008	Indian Game, AC Hen
Class 10009	Malay Game, AC Cock
Class 10010	Malay Game, AC Hen
Class 10011	OEG Black Red, Light Leg Cock
Class 10012	OEG Black Red, Light Leg Hen
Class 10013	OEG Black Red, Dark Red Cock
Class 10014	OEG Black Red, Dark Red Hen
Class 10015	OEG Duckwing, AC Cock
Class 10016	OEG Duckwing, AC Hen
Class 10017	OEG Brown Red Cock
Class 10018	OEG Brown Red Hen
Class 10019	Standard Hard Feathered, AOV Cock
Class 10020	Standard Hard Feathered, AOV Hen
Class 10021	Standard Hard Feathered Breeding Trio

- **CHAMPION HARD FEATHERED GAME BIRD - \$15 donated by GH Crawford Memorial**
- **Champion Hard Feathered Game Male- Sash**
- **Champion Hard Feathered Game Female- Sash**

## W - STANDARD HEAVY BREEDS

Class 10041	Australorp AC Cock
Class 10042	Australorp AC Hen
Class 10043	Australorp AC Cockerel
Class 10044	Australorp AC Pullet
Class 10045	Rhode Island Red Cock
Class 10046	Rhode Island Red Hen
Class 10047	Rhode Island Red Cockerel
Class 10048	Rhode Island Red Pullet
Class 10049	Sussex Light Cock
Class 10050	Sussex Light Hen
Class 10051	Sussex Light Cockerel
Class 10052	Sussex Light Pullet
Class 10053	Sussex AOC Cock
Class 10054	Sussex AOC Hen
Class 10055	Langshan Cock
Class 10056	Langshan Hen
Class 10057	Langshan Cockerel
Class 10058	Langshan Pullet
Class 10059	Plymouth Rock, Dark Barred Cock
Class 10060	Plymouth Rock, Dark Barred Hen
Class 10061	Plymouth Rock, Dark Barred Cockerel
Class 10062	Plymouth Rock, Dark Barred Pullet
Class 10063	Plymouth Rock, Light Barred Cock
Class 10064	Plymouth Rock, Light Barred Hen
Class 10065	Orpington Black Cock
Class 10066	Orpington Black Hen

Class 10067	Orpington Buff Cock
Class 10068	Orpington Buff Hen
Class 10069	New Hampshire Cock
Class 10070	New Hampshire Hen
Class 10071	Wyandotte Gold Laced Cock
Class 10072	Wyandotte Gold Laced Hen
Class 10073	Wyandotte Silver Laced Cock
Class 10074	Wyandotte Silver Laced Hen
Class 10075	Wyandotte White Cock
Class 10076	Wyandotte White Hen
Class 10077	Wyandotte AOC Cock
Class 10078	Wyandotte AOC Hen
Class 10079	Dorking Cock
Class 10080	Dorking Hen
Class 10081	Standard Heavy Breed AOV Cock
Class 10082	Standard Heavy Breed AOV Hen
Class 10083	Standard Heavy Breeding Trio

- **CHAMPION HEAVY BREED - Sash donated by Bellsouth**
- **Champion Heavy Breed Male- Sash**
- **Champion Heavy Breed Female – Sash**

## W - WATERFOWL

Class 10129	Cayuga Drake
Class 10130	Cayuga Duck
Class 10131	Rouen Drake
Class 10132	Rouen Duck
Class 10133	Pekin Drake
Class 10134	Pekin Duck
Class 10135	Indian Runner White Drake
Class 10136	Indian Runner White Duck
Class 10137	Indian Runner AORC Drake
Class 10138	Indian Runner AORC Duck
Class 10139	Buff Orpington Drake
Class 10140	Buff Orpington Duck
Class 10141	Muscovy White Drake
Class 10142	Muscovy White Duck
Class 10143	Muscovy AORC Drake
Class 10144	Muscovy AORC Duck
Class 10145	Aylesbury Drake
Class 10146	Aylesbury Duck
Class 10147	Campbell Khaki Drake
Class 10148	Campbell Khaki Duck
Class 10149	Goose ARV Drake
Class 10150	Goose ARV Duck
Class 10171	Mallard Natural Drake
Class 10172	Mallard Natural Duck
Class 10173	Mallard White, Yellow Bill Drake
Class 10174	Mallard White, Yellow Bill Duck
Class 10175	Mallard Fawn Drake
Class 10176	Mallard Fawn Duck
Class 10177	Mallard Dusky Drake
Class 10178	Mallard Dusky Duck

Class 10179	Mallard Brown Drake
Class 10180	Mallard Brown Duck
Class 10181	Mallard Silver Drake
Class 10182	Mallard Silver Duck
Class 10183	Mallard Laxed Fawn Drake
Class 10184	Mallard Laxed Fawn Duck
Class 10185	Mallard White, White Bill Drake
Class 10166	Mallard White, White Bill Duck
Class 10187	Mallard AORC Drake
Class 10188	Mallard AORC Duck
Class 10189	Call ARC Drake
Class 10190	Call ARC Duck
Class 10191	Silver Appleyard Drake
Class 10192	Silver Appleyard Duck
Class 10193	Waterfowl AORV Drake
Class 10194	Waterfowl AORV Duck
Class 10195	Waterfowl Breeding Trio

- **CHAMPION WATERFOWL Bag of Feed Donated by NRAg**
- **Champion Waterfowl Male- Sash**
- **Champion Waterfowl Female – Sash**

## W - BANTAM HARD FEATHERED

Class 10250	Modern Game Black Red Cock
Class 10251	Modern Game Black Red Hen
Class 10252	Modern Game Duckwing Cock
Class 10253	Modern Game Duckwing Hen
Class 10254	Modern Game Pile Cock
Class 10255	Modern Game Pile Hen
Class 10256	Modern Game AORC Cock
Class 10257	Modern Game AORC Hen
Class 10258	OEG Black Red, Dark Leg Cock
Class 10259	OEG Black Red, Dark Leg Hen
Class 10260	OEG Black Red, Light Leg Cock
Class 10261	OEG Black Red, Light Leg Hen
Class 10262	OEG Duckwing AOC Cock
Class 10263	OEG Duckwing AOC Hen
Class 10264	OEG Spangled Cock
Class 10265	OEG Spangled Hen
Class 10266	OEG Black Cock
Class 10267	OEG Black Hen
Class 10268	OEG Blue Red Cock
Class 10269	OEG Blue Red Hen
Class 10270	OEG Wheaton Hen
Class 10271	OEG AORC Cock
Class 10272	OEG AORC Hen
Class 10273	Indian Game Dark Cock
Class 10274	Indian Game Dark Hen
Class 10275	Indian Game Jubilee Cock
Class 10276	Indian Game Jubilee Hen
Class 10277	Hard Feathered Bantam AOV Cock
Class 10278	Hard Feathered Bantam AOV Hen

Class 10279	Hard Feathered Bantam Breeding Trio
-------------	-------------------------------------

- **CHAMPION Hard Feathered Bantam Donated by P Hunter Sash donated by I & MR Fulwood**
- **Champion Hard Feathered Bantam Male- Sash**
- **Champion Hard Feathered Female – Sash**
- **CHAMPION BIRD OF SHOW - POULTRY - \$400 Donated by Murray Pest Control Framed Portrait of Champion Donated by Clive Palmer Photography**
- **RESERVE CHAMPION BIRD OF SHOW - Poultry - \$130 Donated by Murray Pest Control (\$100), donated by TR & LP Ellis (\$15), donated by Wardle & Co Real Estate (\$15), Bag of Feed donated by Laucke Mills, Sash donated by LH Perry & Sons**
- **CHAMPION BREEDING TRIO - Wheat Donated by CC Cooper & Co**

## W - JUNIOR POULTRY

Class 10301	Bantam OEG ARC Cock
Class 10302	Bantam OEG ARC Hen
Class 10303	Bantam OEG ARC Cockeral
Class 10304	Bantam OEG ARC Pullet
Class 10305	Hard Feathered Bantam AOV Cock
Class 10306	Hard Feathered Bantam AOV Hen
Class 10307	Hard Feathered Bantam AOV Cockeral
Class 10308	Hard Feathered Bantam AOV Pullet
Class 10309	Bantam Soft Feathered ARV Cock
Class 10310	Bantam Soft Feathered ARV Hen
Class 10311	Bantam Soft Feathered ARV Cockeral
Class 10312	Bantam Soft Feathered ARV Pullet
Class 10313	Standard Hard Feathered ARV Cock
Class 10314	Standard Hard Feathered ARV Hen
Class 10315	Standard Hard Feathered ARV Cockeral
Class 10316	Standard Hard Feathered ARV Pullet
Class 10317	Standard Soft Feathered ARV Cock
Class 10318	Standard Soft Feathered ARV Hen
Class 10319	Standard Soft Feathered ARV Cockeral
Class 10320	Standard Soft Feathered ARV Pullet
Class 10321	Waterfowl ARV Cock
Class 10322	Waterfowl ARV Hen
Class 10323	Waterfowl ARV Cockeral
Class 10324	Waterfowl ARV Pullet

- **CHAMPION JUNIOR Sash & Feed donated by Laucke**
- **Junior Aggregate Points - Sash, Feed donated by KLR a Nutrien Ag Solutions partner**



[www.jamestownjournal.com.au](http://www.jamestownjournal.com.au)

*Jamestown's Local Newspaper,  
Published Monthly*

ADVERTISE YOUR BUSINESS,  
CLUB OR ORGANISATION'S  
FUNCTIONS IN THE  
JAMESTOWN JOURNAL



**Contact Tracey Dewell**

p: 0427 88 11 04

e: [journaljamestown@gmail.com](mailto:journaljamestown@gmail.com)



*For all your  
sawmilling  
needs!*

**Morgan Sawmill**

PALLETS | BINS | POSTS | WOODCHIPS

**Phone: 08 8664 0392**

Website: [www.morgansawmill.com.au](http://www.morgansawmill.com.au)

Email: [sales@morgansawmill.com.au](mailto:sales@morgansawmill.com.au)



# WORM'S MITRE 10

4675 WILKIN'S HIGHWAY, JAMESTOWN. PH (08) 8664 1136

## SERVICES

- **AMMUNITION**
- **AUTOMOTIVE & TRAILER SPARES**
- **PUBLIC WEIGHBRIDGE**
- ***KINGS* STOCKIST**
- **BUILDING SUPPLIES**
- ***GardenCentre***
- **SAND & METAL YARD**
- **LANDSCAPE SUPPLIES**

**And YES! We do sell WORMS!**

# X | PIGEONS

**CONVENOR:** Michael Lanyon 0402 326 361

**STEWARD:** D Lanyon, T King

**Entries close** Monday 29th September 2025.

**Entry fee** is 50c per entry

**Prize money:** First \$3, Second \$2, Third \$1

**Points allotted:** First 5, Second 3, Third 1.

**Reserved parking for poultry and pigeon exhibitors on Kilmarnock Tce next to new poultry pavilion. Vehicles do not need to enter the showgrounds to access pavilion.**

**Online Entries/Membership via**

<https://showday.online/show/jamestown>,  
closing Date Monday 29th September

**Manual Entry** either in Show Book, online at  
<https://jamestownshow.com.au> or email

[entries@jamestownshow.com.au](mailto:entries@jamestownshow.com.au)

## CONDITIONS

- All exhibits to be penned by 10 am on Sunday 5th October and to remain until 4:30 pm.
- Exhibits encouraged to be penned Saturday by arrangement with the convenor.
- To be eligible for Association Aggregate Trophy please read guidelines found in front of book.
- After unloading birds exhibitors must park vehicles in exhibitor's car park.
- Coops provided & can be locked if exhibitors bring their own padlocks.
- All exhibits to be penned by 10 am on Sunday 5th October and to remain until Monday 4:00 pm. Birds coming from more than 100 kms away may be removed 4:30pm Sunday 5th October by arrangement with convenor

## X - SHOW PEN HOMERS

Class 11326	Blue or Black Chequer Cock Old
Class 11327	Blue or Black Chequer Hen Old
Class 11328	Blue or Black Chequer Cock Young
Class 11329	Blue or Black Chequer Hen Young
Class 11330	Red Chequer Cock Old
Class 11331	Red Chequer Hen Old
Class 11332	Red Chequer Cock Young
Class 11333	Red Chequer Hen Young
Class 11334	Blue Barred Cock Old
Class 11335	Blue Barred Hen Old
Class 11336	Blue Barred Cock Young
Class 11337	Blue Barred Hen Young
Class 11338	Grizzle Cock Old
Class 11339	Grizzle Hen Old
Class 11340	Grizzle Cock Young
Class 11341	Grizzle Hen Young
Class 11342	Pied Cock Old
Class 11343	Pied Hen Old

Class 11344	Pied Cock Young
Class 11345	Pied Hen Young
Class 11346	A.O.C Cock Old
Class 11347	A.O.C Hen Old
Class 11348	A.O.C Cock Young
Class 11349	A.O.C Hen Young
Class 11350	Mealy Cock Old
Class 11351	Mealy Hen Old
Class 11352	Mealy Cock Young
Class 11353	Mealy Hen Young
Class 11354	White Cock Old
Class 11355	White Hen Old
Class 11356	White Cock Young
Class 11357	White Hen Young

- **Highest points Classes 11326-11357 Show Pen Homers - \$15 donated by B R & P J Boulton**

## X - UTILITY BREEDS

Class 11360	Mondain A C Cock
Class 11361	Mondain A C Hen
Class 11362	Mondain A C Young
Class 11363	Runt A C Cock
Class 11364	Runt A C Hen
Class 11365	Runt A C Young
Class 11366	Carneaux Yellow (solid) Cock
Class 11367	Carneaux Yellow (solid) Hen
Class 11368	Carneaux Yellow (solid) Young
Class 11369	Carneaux Yellow (solid) Cock
Class 11370	Carneaux Cranium Red (solid) Hen
Class 11371	Carneaux Cranium Red (solid) Young
Class 11372	Carneaux A O C Cock
Class 11373	Carneaux A O C Hen
Class 11374	Carneaux A O C Young
Class 11375	Carneaux A O C Cock
Class 11376	King White Hen
Class 11377	King White Young
Class 11378	King Blue Barred Cock
Class 11379	King Blue Barred Hen
Class 11380	King Blue Barred Young
Class 11381	King A C Chequer Cock
Class 11382	King A C Chequer Hen
Class 11383	King A C Chequer Young
Class 11384	King A C Barred Cock
Class 11385	King A C Barred Hen
Class 11386	King A C Barred Young
Class 11387	King A C Barred Cock
Class 11388	King A O C Hen
Class 11389	King A O C Young
Class 11390	Utility Breed AVO Cock
Class 11391	Utility Breed AVO Hen
Class 11392	Utility Breed AVO Young

- **Highest points Classes 11360-11392 - Utility Breeds - \$15 donated by K I Wurst**



## X - FANCY BREED

Class 11393	Ice A. C. Cock
Class 11394	Ice A. C. Hen
Class 11395	Ice A. C. Young
Class 11396	Magpie Black Cock
Class 11397	Magpie Black Hen
Class 11398	Magpie Black Young
Class 11399	Magpie Red or Yellow Cock
Class 11400	Magpie Red or Yellow Hen
Class 11401	Magpie A. O. C. Cock
Class 11402	Magpie A. O. C. Hen
Class 11403	Magpie A. C. Young
Class 11404	Tumbler L/F A. C. Cock
Class 11405	Tumbler L/F A. C. Hen
Class 11406	Tumbler L/F A. C. Young
Class 11407	Tumbler S/F A. C. Cock
Class 11408	Tumbler S/F A. C. Hen
Class 11409	Tumbler S/F A. C. Young
Class 11410	Turbit A. C. Cock
Class 11411	Turbit A. C. Hen
Class 11412	Turbit A. C. Young
Class 11413	Carrier Solid Colour Cock
Class 11414	Carrier Solid Colour Hen
Class 11415	Carrier A. O. C. Cock
Class 11416	Carrier A. O. C. Hen
Class 11417	Carrier AC Bar Cock
Class 11418	Carrier AC Bar Hen
Class 11419	Carrier A. C. Young
Class 11420	Helmet A. C. Cock
Class 11421	Helmet A. C. Hen
Class 11422	Helmet A. C. Young
Class 11423	Dragoon A. C. Cock
Class 11424	Dragoon A. C. Hen
Class 11425	Dragoon A. C. Young
Class 11426	Jacobin Black Cock
Class 11427	Jacobin Black Hen
Class 11428	Jacobin Red or Yellow Cock
Class 11429	Jacobin Red or Yellow Hen
Class 11430	Jacobin A. O. C. Cock
Class 11431	Jacobin A. O. C. Hen
Class 11432	Jacobin A. C. Young
Class 11433	Fantail White Cock
Class 11434	Fantail White Hen
Class 11435	Fantail White Young
Class 11436	Fantail A. O. C. Cock
Class 11437	Fantail A. O. C. Hen
Class 11438	Fantail A. C. Young
Class 11439	Modena Schiette Bronze or Tri Cock
Class 11440	Modena Schiette Bronze or Tri Hen
Class 11441	Modena Schiette Bronze or Tri Young
Class 11442	Modena Schiette Black Cock
Class 11443	Modena Schiette Black Hen
Class 11444	Modena Schiette Red Cock
Class 11445	Modena Schiette Red Hen
Class 11446	Modena Schiette Blue Cock
Class 11447	Modena Schiette Blue Hen
Class 11448	Modena Schiette A. O. C. Cock
Class 11449	Modena Schiette A. O. C. Hen
Class 11450	Modena Schiette A. C. Young
Class 11451	Modenna Gazzi Bronze or Tri Cock

Class 11452	Modenna Gazzi Bronze or Tri Hen
Class 11453	Modenna Gazzi Bronze or Tri Young
Class 11454	Modenna Gazzi Blue Cock
Class 11455	Modenna Gazzi Blue Hen
Class 11456	Modenna Gazzi Black Cock
Class 11457	Modenna Gazzi Black Hen
Class 11458	Modenna Gazzi Red or Yellow Cock
Class 11459	Modenna Gazzi Red or Yellow Hen
Class 11460	Modenna Gazzi A. O. C. Bar Cock
Class 11461	Modenna Gazzi A. O. C. Bar Hen
Class 11462	Modenna Gazzi A. O. C. Cock
Class 11463	Modenna Gazzi A. O. C. Hen
Class 11464	Modena Gazzi A. C. Young
Class 11465	Blondinette A. C. Cock
Class 11466	Blondinette A. C. Hen
Class 11467	Blondinette A. C. Young
Class 11468	Satinette A. C. Cock
Class 11469	Satinette A. C. Hen
Class 11470	Satinette A. C. Young
Class 11471	African Owl Black or Dun Cock
Class 11472	African Owl Black or Dun Hen
Class 11473	African Owl A. O. C. Cock
Class 11474	African Owl A. O. C. Hen
Class 11475	African Owl A. C. Young
Class 11476	Pigmy Pouter Blue or Black Cock
Class 11477	Pigmy Pouter Blue or Black Hen
Class 11478	Pigmy Pouter Red Cock
Class 11479	Pigmy Pouter Red Hen
Class 11480	Pigmy Pouter A. O. C. Cock
Class 11481	Pigmy Pouter A. O. C. Hen
Class 11482	Pigmy Pouter A. C. Young
Class 11483	Nun Black Cock
Class 11484	Nun Black Hen
Class 11485	Nun A. O. C. Cock
Class 11486	Nun A. O. C. Hen
Class 11487	Nun A. C. Young
Class 11488	German Beard A. C. Cock
Class 11489	German Beard A. C. Hen
Class 11490	German Beard A. C. Young
Class 11491	Short Faced Beard A.C Cock
Class 11492	Short Faced Beard A.C Hen
Class 11493	Short Faced Beard A.C Young
Class 11494	Saddleback A.C Cock
Class 11495	Saddleback A.C Hen
Class 11496	Saddleback A.C Young
Class 11497	English Trumpeter A.C Cock
Class 11498	English Trumpeter A.C Hen
Class 11499	English Trumpeter A.C Young
Class 11500	Bokhara Trumpeter A.C Cock
Class 11501	Bokhara Trumpeter A.C Hen
Class 11502	Bokhara Trumpeter A.C Young
Class 11503	English Show Homer A. C. Cock
Class 11504	English Show Homer A. C. Hen
Class 11505	English Show Homer A. C. Young
Class 11506	Fairy Swallow, A.C Cock
Class 11507	Fairy Swallow, A.C Hen
Class 11508	Fairy Swallow, A.C Young
Class 11509	Archangel, A.C Cock
Class 11510	Archangel, A.C Hen
Class 11511	Archangel, A.C Young
Class 11512	Frillback, A.C Cock

Class 11513	Frillback, A.C Hen
Class 11514	Frillback, A.C Young
Class 11515	German Beauty, A.C Cock
Class 11516	German Beauty, A.C Hen
Class 11517	German Beauty, A.C Young
Class 11518	German Beauty, A. C. Bar Cock
Class 11519	German Beauty, A. C. Bar Hen
Class 11520	German Beauty, A. C. Bar Young
Class 11521	Indian Fantail, A.C Cock
Class 11522	Indian Fantail, A.C Hen
Class 11523	Indian Fantail, A.C Young
Class 11524	Silky Fantail, A.C Cock
Class 11525	Silky Fantail, A.C Hen
Class 11526	Silky Fantail, A.C Young
Class 11527	Voorburg Sheild Cropper, A.C Cock
Class 11528	Voorburg Sheild Cropper, A.C Hen
Class 11529	Voorburg Sheild Cropper, A.C Young
Class 11530	A. O. V. Blower, A.C Cock
Class 11531	A. O. V. Blower, A.C Hen
Class 11532	A. O. V. Blower, A.C Young
Class 11533	Fancy A. O. V Cock
Class 11534	Fancy A. O. V Hen
Class 11535	Fancy A. O. V Young
Class 11536	Damschen Cock
Class 11537	Damschen Hen
Class 11538	Damschen Young
Class 11539	Racing Pigeon any colour Cock
Class 11540	Racing Pigeon any colour Hen
Class 11541	Racing Pigeon any colour Young
Class 11542	Exhibition Homer Cock
Class 11543	Exhibition Homer Hen
Class 11544	Exhibition Homer Young
Class 11545	British Show Racer, A. C. Bar Cock
Class 11546	British Show Racer, A. C. Bar Hen
Class 11547	British Show Racer, A. C. Bar Young
Class 11548	British Show Racer, A. O. C. Cock
Class 11549	British Show Racer, A. O. C. Hen
Class 11550	British Show Racer, A. O. C. Young

- **Aggregate Points 11326 - 11550 – Pigeons Grain donated by CC Cooper & Co**
- **Highest points Classes 11393-11550 - Fancy Breeds - \$15 Prize money donated by D & G Ganley**

## X - JUNIOR PIGEONS

Class 11555	Racing Homer A. C. Cock
Class 11556	Racing Homer A. C. Hen
Class 11557	Racing Homer A. C. Young
Class 11558	Showpen Homer A.C Cock
Class 11559	Showpen Homer A.C Hen
Class 11560	Showpen Homer A.C Young
Class 11561	Modena Gazzi A. C. Cock
Class 11562	Modena Gazzi A. C. Hen
Class 11563	Modena Gazzi A. C. Young
Class 11564	Modena Schiette A. C. Cock
Class 11565	Modena Schiette A. C. Hen
Class 11566	Modena Schiette A. C. Young
Class 11567	A. V. Cropper A. C. Cock

Class 11568	A. V. Cropper A. C. Hen
Class 11569	A. V. Cropper A. C. Young
Class 11570	A. V. Pouter A. C. Cock
Class 11571	A. V. Pouter A. C. Hen
Class 11572	A. V. Pouter A. C. Young
Class 11573	A. V. Fantail A. C. Cock
Class 11574	A. V. Fantail A. C. Hen
Class 11575	A. V. Fantail A. C. Young
Class 11576	Longface Fancy A. C. Cock
Class 11577	Longface Fancy A. C. Hen
Class 11578	Longface Fancy A. C. Young
Class 11579	Short Face Fancy A. C. Cock
Class 11580	Short Face Fancy A. C. Hen
Class 11581	Short Face Fancy A. C. Young
Class 11582	Utility Breed A. C. Cock
Class 11583	Utility Breed A. C. Hen
Class 11584	Utility Breed A. C. Young

- **Champion Bird of Show Sash Pigeons - \$15 prize money plus grain donated by Cox Rural Jamestown, Sash donated by J Barlow,**
- **Champion Sash's awarded to Cock**
- **Aggregate Points – Pigeon Grain donated by CC Cooper & Co**
- **RESERVE CHAMPION BIRD OF SHOW – PIGEONS Sash donated by LH Perry & Sons**
- **Champion Young Show Pen Homer -Sash**
- **Champion Old Show Pen Homer- Sash**
- **Champion Ribbons will be awarded for Old Utility, Young Utility**
- **Champion Fancy- Cock, Hen & Young, Sash**
- **Champion Sash's awarded to Young Champion Junior**
- **Highest points Class 11555–11584 - Junior Pigeons - \$15 Prize money**
- **Champion Sash's awarded to Hen**

# SUNDAY FIREWORKS



THANKS TO **WSB** DISTRIBUTORS

# **Y | CLASSIC CARS,** **MOTORBIKES & OLD** **MACHINERY**

**Major Sponsor - Hunts Fuel**

**Sponsored by Wayne Miller, Dave Evans, Des Kelly,  
Webbs Tyres**

**CONVENOR:** Merv Robinson 0417 863 450  
\$5 entry fee if you wish to compete for a prize.

Entries accepted on Show day. Please contact  
convenor or secretary for further information.

## **CONDITIONS -**

Vehicles enter from the western gate on South  
Terrace and then drive to the southwest gate onto  
the oval and proceed to the northern goal post area.  
There will be signs from the South Terrace entrance.

- Free pass for any classic vehicle and driver
- Passengers must pay gate entry.

**Online Entries/Membership via**  
<https://showday.online/show/jamestown>,  
closing Date Friday 3rd October  
**Manual Entry** either in Show Book, online at  
<https://jamestownshow.com.au> or email  
[entries@jamestownshow.com.au](mailto:entries@jamestownshow.com.au)

## **Y - Classes**

- Class 12500 Holden
- Class 12501 Ford
- Class 12502 Chrysler
- Class 12503 Other - vehicles other  
than those stated
- Class 12504 Motor Bikes
- Class 12505 Old Tractors & Stationary  
Machinery

- **OVERAL BEST OF SHOW IN CLASSES 12501-  
12505 - \$50 Gift Card from Auto Pro Port Pirie**
- **\$50 CASH PRIZE FOR EACH CLASS**



**À la carte Menu - Monday to Saturday**

**Pizza's - Friday, Saturday & Sunday**

**Schnitzel & Fish Night - Tues & Wed**

**SipnSave**

**9 Motel Units**

Mobile Cool room available for hire  
Courtesy van for pick-ups & drop offs  
(subject to availability)

~ Vouchers Available ~

**Open:** Sun - Tues from 4pm, Wed - Sat from 11am

**32 Alexandra Tce | Ph 8664 1035**

[railwayhoteljamestown.com.au](http://railwayhoteljamestown.com.au)



# **Z | HORSES IN ACTION**

**CONVENORS: Gabi Ashmeade - 0428 974 747**

## **CONDITIONS:**

Entries close: Wednesday 2nd October 2025.

**Entry fee is \$2.50 per class** – this is regardless of which membership option is selected. Entries will not be accepted unless they are on the official entry form and accompanied by fees and completed waiver form.

## **Online Entries/Membership via**

<https://showday.online/show/jamestown>,  
closing Date Wednesday 2nd October 2025

PIC number must be included on entry form.

**Name of horse and rider must accompany entry form.**

1. Jamestown A H & F Society is affiliated with EA & Horse SA.
2. All exhibitors must be members of the Jamestown A H & F Society Inc. to compete.
3. Floats to enter the horse gate only and park where indicated by stewards.
4. All rings to commence judging at 9.00am sharp.
5. Classes in each ring may be held if there are clashes between breed and ridden classes and will be done so at the discretion of the convenor on the day and announced over the loudspeaker.
6. All horses are to comply with regulations regarding measuring. Certificates to be produced upon request.
7. Horses entered in Ring One are eligible to enter led classes only in Ring Two.
8. Specified ages are the age of the rider on the day of the show.
9. Pony Club events are for financial members only, in Pony Club uniform. Performance cards to be produced upon request.
10. All competitors must be suitably attired and wearing an approved helmet.

## **Z - RING ONE – ENCOURAGE RING**

**9.00am Start | Judge: TBC**

**Ribbons** awarded 1st, 2nd and 3rd

**Prize Money** 1st = \$10, 2nd = \$5, 3rd = \$3

## **RING ONE – ENCOURAGE RING**

Class 12001 Pony ne 12hh

Class 12002 Pony 12hh ne 13hh

Class 12003 Pony 13hh ne 14hh

Class 12004 Lightweight Pony ne 14hh

Class 12005 Heavyweight Pony ne 14hh

Class 12006 Open Pony ne 14hh

- **Champion Pony Classes 12001-12006**
- **Reserve Champion Pony Classes 12001-12006**

Class 12007 Rider 9 yrs and under

Class 12008 Rider 10 yrs and under 14yrs

Class 12009 Rider 14 yrs and under 18yrs

- **Champion Junior Rider Classes 12007-12009**
- **Reserve Champion Junior Rider Classes 12007-12009**

Class 12010 Galloway 14hh ne 14.2hh

Class 12011 Galloway 14.2hh ne 15hh

Class 12012 Lightweight Galloway 14hh ne 15hh

Class 12013 Heavyweight Galloway 14hh ne 15hh

Class 12014 Open Galloway 14hh ne 15hh

- **Champion Galloway Classes 12010-12014**
- **Reserve Champion Galloway Classes 12010-12014**

Class 12015 Rider 18yrs and under 21yrs

Class 12016 Rider 21 yrs and under 30yrs

Class 12017 Rider 30yrs and over

- **Champion Senior Rider Classes 12015-12017**
- **Reserve Champion Senior Rider Classes 12015-12017**

Class 12018 Hack 15hh ne 16hh

Class 12019 Hack over 16hh

Class 12020 Lightweight Hack over 15hh

Class 12021 Heavy weight Hack over 15hh

Class 12022 Open Hack over 15hh

- **Champion Hack Classes 12018-12022**
- **Reserve Champion Show Hunter Hack**
- **The Clarry Kerslake Memorial Supreme Champion Hack To be held at the completion of Ring One Winner to receive sash and trophy (Eligible if have won a Hack Champion in Ring One)**
- **Reserve Champion Hack Classes 12001-12022**
- **Supreme Champion Show Hunter**

To be held at the completion of Ring One Winner to receive sash and voucher. (Eligible if have won a Hunter Champion in Ring One)



The Mary Kerslake Memorial Trophy for Supreme Champion Rider  
To be held at the completion of Ring One Winner to receive a sash and trophy (Eligible if have won Champion Junior or Senior Rider)

## **Z -RING TWO – TINY TOTS, PONY CLUB & LED**

**9.00am Start | JUDGE: TBC**

**Ribbons Awarded:** 1st, 2nd, and 3rd

**Prize Money** 1st = \$10, 2nd = \$5, 3rd = \$3

### **LED CLASSES**

- Class 12023 Led Gelding under 12hh
- Class 12024 Led Mare under 12hh
- Class 12025 Led Gelding 12hh ne 14hh
- Class 12026 Led Mare 12hh ne 14hh
- Class 12027 Led Gelding 14hh ne 15hh
- Class 12028 Led Mare 14hh ne 15hh
- Class 12029 Led Gelding over 15hh
- Class 12030 Led Mare over 15hh

- **Champion Led Exhibit (From Classes 12023-12030)**
- **Reserve Champion Led Exhibit Classes 12023-12030**

### **TINY TOTS (MUST BE LED)**

- Class 12031 Led Handler 6 yrs and under
- Class 12032 Led Handler 7yrs and under 10 yrs
- Class 12033 Smartest on Parade 6 yrs and under
- Class 12034 Smartest on Parade 7 yrs and under 10 yrs
- Class 12035 Tiny Tots Pony ne 12hh
- Class 12036 Tiny Tots Pony 12hh ne 13hh
- Class 12037 Tiny Tots Pony over 13hh
- Class 12038 Prettiest Pony
- Class 12039 Hairiest Pony
- Class 12040 Longest Tail
- Class 12041 Rider 6yrs and under
- Class 12042 Rider 7yrs and under 10yrs

- **Champion Tiny Tots Classes 12031-12042**
- **Reserve Champion Tiny Tots Open Classes 12031-12042**

## **PONY CLUB**

- Class 12043 Smartest of Parade – Pony Club Attire
- Class 12044 Pony Club Mount ne 14hh
- Class 12045 Pony Club Mount over 14hh
- Class 12046 Most versatile Pony Club Mount & Rider
- Class 12047 Best Educated Pony Club Mount
- Class 12048 Pair of Ponies, Galloways or Hacks

- **Champion Pony Club Combination Classes 12043-12048**
- **Reserve Champion Pony Club Combination Classes 12043-12048**



# REGULATIONS

1. A subscription of \$30 annually to the funds of the Society is the necessary qualification for membership. All members who have paid their subscription for the previous year and any new members who have paid their subscriptions of the current year shall be entitled to one voice and vote in the proceedings of the Society and to all such rights and privileges to which members are entitled.
2. Members who have paid a subscription of \$45 for the year are entitled to: Members Ticket, 2 Adult and 3 Children's Tickets, Free Car Parking plus, Free entries for exhibits in Stacey Pavilion at the Annual Show, Two Children's Tickets transferrable for one Adult Members Ticket
3. Members who have paid \$30 for the year are entitled to: 1 Members Ticket, 2 Adult Ticket, Free Car Parking
4. Non-members can exhibit in any class for competition at the Annual Show, under the prescribed conditions, on payment of the entry fees prescribed for each section.
5. Prices of admission to Showground on day of Show will be: Members and Subscribers on presentation of tickets (wristbands,) Adults non-members: \$16, Children under 16 years of age: \$8, Pre-school children: Free, Motor cars vehicles: \$2 Members' cars and vehicles will be admitted free on presentation of vehicle ticket.
6. All exhibits must be the bona-fide property of the exhibitor, and in Sections A E F G K L M N O P Q R S T U V W X, and where specified in Sections G and I, must have been grown, made, produced or bred by the exhibitor as the case may be.
7. The judges are empowered to decide the age of any animal exhibited at the Shows of the Society.
8. The judges are empowered to withhold prizes in any class or classes wherein the quality of the exhibits does not, in their opinion, merit an award; they may award a second prize in lieu of a first or a third in lieu of a second prize and need give no reasons for the withholding or substitution of such prize or prizes.
9. Any misstatement or misrepresentation made in any pedigree certificate handed in with any entry of an exhibit or in entering an exhibit or exhibits in classes where the expressed conditions are not complied with shall render such exhibit or exhibits liable to disqualification and the prize or prizes (if any) liable to forfeiture. Any exhibitor or person interfering in any way with or making use of insulting words to the judge or judges, steward or stewards shall render their exhibit or exhibits liable to disqualification and any prize or prizes liable to forfeiture and may render themselves liable to disqualification as exhibitors at the Shows of the Society and to have their names expunged from the roll of members of the Society.
10. (Vide sub-section [d] of No. 7 of the Rules and Constitution of the Society.)
11. No person shall act as a judge in any class in which he or she is an exhibitor, or in which he or she has a material interest.
12. In Sections L and M, any exhibit in any class, after having taken a first prize, is thereby debarred from competition in any other class in those sections.
13. Entries for all exhibits for the Show are received by the Secretary of the Society or his/her staff subject to the approval of the Executive Committee, who may decline to accept such entry without assigning any reason for doing so, and entries for exhibits in all classes are received by the Society only on the express condition that the exhibitor agrees to abide by the decision of the judges, stewards and executive committee, and that the decisions and awards made are given as final and not subject to any actions at law.
14. Protests against awards must be lodged, in writing, at the office of the Secretary within one hour of the time from which such awards have been made known to the public, and the grounds of protest must be stated. Protests must be accompanied by a deposit of a sum equal to half the amount of the prize awarded with which the protest is concerned, and if the protest is not upheld or if it is considered frivolous, the deposit may be forfeited.
15. Protests will be considered, and a decision given by the Executive Committee of the Society.
16. The Society reserves the right to sell or lease any concessions, subject to sundry agreements already completed, for the rights to carry on business, entertainments or other undertakings on its showground on the days of its Annual Shows and will grant such rights and such space as is deemed desirable by the Executive
17. Committee under the conditions set out on the application form and schedule prepared for that purpose.
18. Demonstration motorcars and motorcycles and/or goods or machines of a similar nature, on the application of bona-fide distributors, will be allotted space suitably located on the show grounds. In the event of bookings exceeding the space available, the Conveners will allot space in proportion to the ratio of bookings. Machinery Sites: 6m x 12m \$100 for car dealers. Machinery block 20m x 20m \$200
19. All horses, cattle and sheep must not be removed until 4 pm unless otherwise provided, as set out in sectional headings. All other exhibits must not be removed until 3.30 pm. For any infringement of this rule, the prize, if any, may be forfeited.
20. Owners of entire horses must have a person in charge of such entire. All horse stock to keep in ground allotted only.
21. All prize winners in horse and cattle classes must parade their stock, failing to do so they may be liable to have their prize or prizes in that Section absolutely forfeited.
22. Should there be any reason to suspect that any exhibit is either diseased or dangerous, the Society reserves the right of refusing admittance to or removing same from the ground at the expense of the exhibitor.
23. Winners of cups or trophies, which must be won more than once in order to become the absolute property of final winner, may obtain possession of said cup or trophy for the year following date of Show at which they have been awarded same, on condition that they give to the Secretary of the Society an undertaking to return said cup or trophy to the Society in good order and condition not later than three weeks before the date of the Show next, following the one at which they were awarded the cup or trophy.
24. The Society recognizes Yates Garden Guide as the standard work of reference regarding exhibits in Section M.
25. Any conditions or regulations printed in the prize list under the various Section headings are to be construed as part of the regulations governing the conduct of the Show of the Society and equally binding on exhibitors.
26. All sideshow personnel must have pegs of tents, etc., adequately concealed to protect the public.
27. All persons entering the grounds or premises on which the Jamestown Agricultural, Horticultural and Floricultural Society Inc. Show is conducted, whether as spectators, competitors or otherwise, do so at their own risk, and the Society is unable to hold itself responsible for damage or loss which may be suffered by any person so entering, whether caused by an act or omission (negligent or otherwise) of the Society or any of its servants, agents or employees. No responsibility shall rest on and no liability shall be incurred by The Society in respect to any event connected with the Show. The Society will not under any circumstances hold itself liable for any accident on the grounds or premises.
28. Drivers of any vehicles will be admitted only on presentation of admission of members tickets or admission fees.
29. The Society does not permit goods or badges to be sold by hawking unless permission is granted.
30. The pavilion will be closed to all exhibitors at 10:00 am Sunday. (This will be strictly adhered to.) All Conveners and stewards shall remain in the Pavilion. Exhibits arriving after the above stated times may, by permission of the Executive Committee, be exhibited, but will be excluded from competition.
31. Cash payouts of prize money can be collected from the Show Office Monday October 6 between 9am to 3pm. Prize money and trophies will be paid by conveners in events held outside Stacey Pavillion. Prize money and trophies which have not been collected by 3pm Monday 6<sup>th</sup> October will be forfeited Refer to Page 9 PRIZE MONEY & TROPHIES
32. Any person or attendant giving annoyance to any Section Conveners, committee member or secretary shall be removed from the ground.
33. A first prize to count five points, second prize to count three points, third prize to count one point. Champion prizes do not count. In the event of a tie for highest points, the exhibitor who gains the most first prizes will be declared the winner.
34. Exhibitors must gain at least 15 points to win an aggregate trophy.
35. Entries in Stacey Pavilion must be in one name only. Entries may be in family names for sections L, M & N, but only one amount of prize money or trophy will be awarded.
36. Every reasonable care will be taken of exhibits, but no responsibility will be incurred by The Society.



## AMPOL JAMESTOWN ROADHOUSE

- 24 hour Fuel Requirements
- Dine In & Take Away Food
- Hot Meals: Pizza's, Schnitzels, Seafood
- Tea, Coffee & Cake
- Cold Drinks & Ice
- Restroom Facilities

Come in and see our friendly staff today

TRADING HOURS:  
6.00am - 10.00pm  
Open 7 days

**TEL: 0427 334 043**



jamestown\_roadhouse



Hunts Fuel - Jamestown Roadhouse

**44 Mannanarie Road  
JAMESTOWN SA 5491**



# WSB DISTRIBUTORS

AGRICULTURAL & INDUSTRIAL MACHINERY • MECHANICAL & AUTO ELECTRICAL • PRECISION AGRICULTURE

MID NORTH | UPPER NORTH | LOWER NORTH | MURRAY MALLEE | RIVERLAND | EYRE PENINSULA | YORKE PENINSULA

## SPONSOR OF THE JAMESTOWN SHOW FIREWORKS 2025

Visit the WSB Distributors team at the Jamestown Show to explore our range of trusted global brands designed to meet local demands with efficiency and reliability.



Seeking tailored solutions for your farm?  
**WSB DISTRIBUTORS HAS ALL YOU NEED TO GROW**



[sales@wsb.com.au](mailto:sales@wsb.com.au)



**1300 000 972**

[www.wsb.com.au](http://www.wsb.com.au)

